



PP6R2 rabbit pAb

Catalog No	YP-Ab-08158
Isotype	IgG
Reactivity	Human; Mouse
Applications	WB
Gene Name	PPP6R2 KIAA0685 PP6R2 SAPS2
Protein Name	PP6R2
Immunogen	Synthesized peptide derived from human PP6R2 AA range: 59-109
Specificity	This antibody detects endogenous levels of PP6R2 at Human/Mouse
Formulation	Liquid in PBS containing 50% glycerol, 0.5% BSA and 0.273% sodium azide.
Source	Polyclonal, Rabbit,IgG
Purification	The antibody was affinity-purified from rabbit serum by affinity-chromatography using specific immunogen.
Dilution	WB 1:500-2000
Concentration	1 mg/ml
Purity	≥90%
Storage Stability	-20°C/1 year
Synonyms	Serine/threonine-protein phosphatase 6 regulatory subunit 2 (SAPS domain family member 2)
Observed Band	105kD
Cell Pathway	Cytoplasm .
Tissue Specificity	Ubiquitously expressed with strongest expression in the testis followed by liver, heart, kidney, brain and placenta.
Function	function:Regulatory subunit of protein phosphatase 6 (PP6). May function as a scaffolding PP6 subunit. Involved in the PP6-mediated dephosphorylation of NFKBIE opposing its degradation in response to TNF-alpha.,similarity:Belongs to the SAPS family.,subunit:Protein phosphatase 6 (PP6) holoenzyme is proposed to be a heterotrimeric complex formed by the catalytic subunit, a SAPS domain-containing subunit (PP6R) and an ankyrin repeat-domain containing regulatory subunit (ARS). Interacts with PPP6C and NFKBIE. Interacts with ANKRD28.,tissue specificity:Ubiquitously expressed with strongest expression in the testis followed by liver, heart, kidney, brain and placenta.,
Background	Protein phosphatase regulatory subunits, such as SAPS2, modulate the activity of protein phosphatase catalytic subunits by restricting substrate specificity, recruiting substrates, and determining the intracellular localization of the holoenzyme. SAPS2 is a regulatory subunit for the protein phosphatase-6 catalytic subunit (PPP6C; MIM 612725) (Stefansson and Brautigan, 2006



[PubMed 16769727]).[supplied by OMIM, Nov 2010],

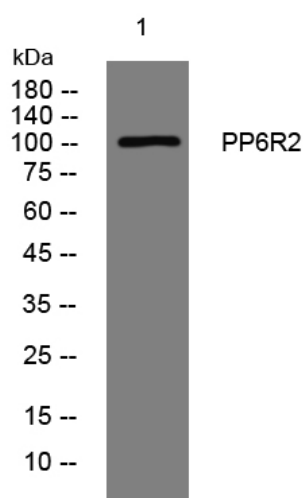
matters needing attention

Avoid repeated freezing and thawing!

Usage suggestions

This product can be used in immunological reaction related experiments. For more information, please consult technical personnel.

Products Images



Western blot analysis of lysates from K562 cells, primary antibody was diluted at 1:1000, 4° over night