



UBP4 rabbit pAb

Catalog No	YP-Ab-08154
Isotype	IgG
Reactivity	Human; Mouse; Rat
Applications	WB
Gene Name	USP4 UNP UNPH
Protein Name	UBP4
Immunogen	Synthesized peptide derived from human UBPA AA range: 155-205
Specificity	This antibody detects endogenous levels of UBPA at Human/Mouse/Rat
Formulation	Liquid in PBS containing 50% glycerol, 0.5% BSA and 0.269% sodium azide.
Source	Polyclonal, Rabbit, IgG
Purification	The antibody was affinity-purified from rabbit serum by affinity-chromatography using specific immunogen.
Dilution	WB 1:500-2000
Concentration	1 mg/ml
Purity	≥90%
Storage Stability	-20°C/1 year
Synonyms	Ubiquitin carboxyl-terminal hydrolase 4 (EC 3.4.19.12) (Deubiquitinating enzyme 4) (Ubiquitin thioesterase 4) (Ubiquitin-specific-processing protease 4) (Ubiquitous nuclear protein homolog)
Observed Band	105kD
Cell Pathway	Cytoplasm . Nucleus . Shuttles between the nucleus and cytoplasm. Exported to the cytoplasm in a CRM1-dependent manner and recycled back to the nucleus via the importin alpha/beta heterodimeric import receptor. The relative amounts found in the nucleus and cytoplasm vary according to the cell type. .
Tissue Specificity	Overexpressed in small cell tumors and adenocarcinomas of the lung compared to wild-type lung (at protein level). Expressed in the hippocampal neurons.
Function	catalytic activity: Ubiquitin C-terminal thioester + H ₂ O = ubiquitin + a thiol.; similarity: Belongs to the peptidase C19 family.; similarity: Contains 1 DUSP domain.;
Background	The protein encoded by this gene is a protease that deubiquitinates target proteins such as ADORA2A and TRIM21. The encoded protein shuttles between the nucleus and cytoplasm and is involved in maintaining operational fidelity in the endoplasmic reticulum. Three transcript variants encoding different isoforms have been found for this gene. [provided by RefSeq, Oct 2011],

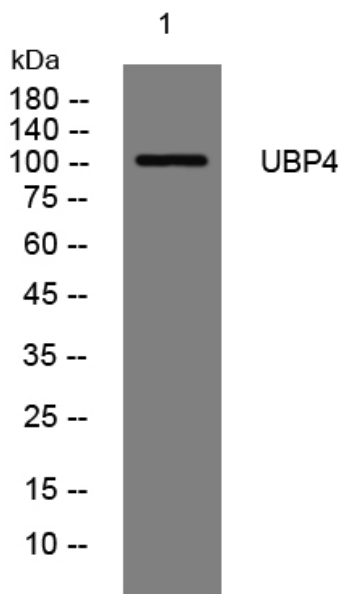
matters needing attention

Avoid repeated freezing and thawing!

Usage suggestions

This product can be used in immunological reaction related experiments. For more information, please consult technical personnel.

Products Images



Western blot analysis of lysates from VEC cells, primary antibody was diluted at 1:1000, 4°over night