



# DRP2 rabbit pAb

<b>Catalog No</b>	YP-Ab-08130
<b>Isotype</b>	IgG
<b>Reactivity</b>	Human; Mouse; Rat
<b>Applications</b>	WB
<b>Gene Name</b>	DRP2
<b>Protein Name</b>	DRP2
<b>Immunogen</b>	Synthesized peptide derived from human DRP2 AA range: 437-487
<b>Specificity</b>	This antibody detects endogenous levels of DRP2 at Human/Mouse/Rat
<b>Formulation</b>	Liquid in PBS containing 50% glycerol, 0.5% BSA and 0.245% sodium azide.
<b>Source</b>	Polyclonal, Rabbit, IgG
<b>Purification</b>	The antibody was affinity-purified from rabbit serum by affinity-chromatography using specific immunogen.
<b>Dilution</b>	WB 1:500-2000
<b>Concentration</b>	1 mg/ml
<b>Purity</b>	≥90%
<b>Storage Stability</b>	-20°C/1 year
<b>Synonyms</b>	Dystrophin-related protein 2 (DRP-2)
<b>Observed Band</b>	105kD
<b>Cell Pathway</b>	Cell junction, synapse, postsynaptic density . Cell projection, dendrite . Perikaryon . Cell membrane ; Peripheral membrane protein . Detected in Schwann cells at periaxonal myelin membranes. .
<b>Tissue Specificity</b>	Detected in fetal brain.
<b>Function</b>	function:Possibly involved in membrane-cytoskeleton interactions of the central nervous system.,similarity:Contains 1 WW domain.,similarity:Contains 1 ZZ-type zinc finger.,similarity:Contains 2 spectrin repeats.,tissue specificity:Brain and spinal cord; very low levels in eye, ovary, epididymis and testis; not in cardiac and skeletal muscle.,
<b>Background</b>	Members of the dystrophin family of proteins perform a critical role in the maintenance of membrane-associated complexes at points of intercellular contact in vertebrate cells. The protein encoded by this gene is predicted to resemble certain short C-terminal isoforms of dystrophin and dystrophin-related protein 1 (DRP1 or utrophin). DRP2 is expressed principally in the brain and spinal cord. Two transcript variants encoding different isoforms have been found for this gene. [provided by RefSeq, Jan 2010],

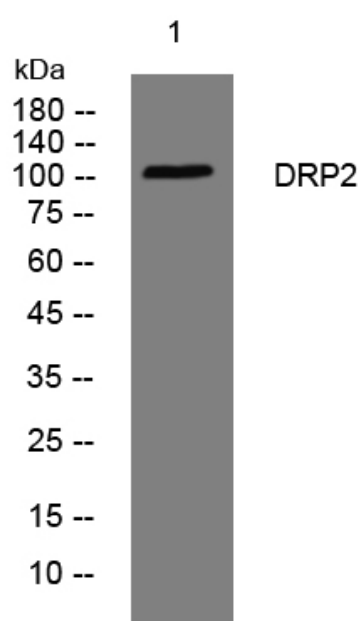
**matters needing attention**

Avoid repeated freezing and thawing!

**Usage suggestions**

This product can be used in immunological reaction related experiments. For more information, please consult technical personnel.

## Products Images



Western blot analysis of lysates from A431 cells, primary antibody was diluted at 1:1000, 4° over night