



GRIK4 rabbit pAb

Catalog No	YP-Ab-08124
Isotype	IgG
Reactivity	Human; Mouse; Rat
Applications	WB
Gene Name	GRIK4 GRIK
Protein Name	GRIK4
Immunogen	Synthesized peptide derived from human GRIK4 AA range: 466-516
Specificity	This antibody detects endogenous levels of GRIK4 at Human/Mouse/Rat
Formulation	Liquid in PBS containing 50% glycerol, 0.5% BSA and 0.239% sodium azide.
Source	Polyclonal, Rabbit, IgG
Purification	The antibody was affinity-purified from rabbit serum by affinity-chromatography using specific immunogen.
Dilution	WB 1:500-2000
Concentration	1 mg/ml
Purity	≥90%
Storage Stability	-20°C/1 year
Synonyms	Glutamate receptor, ionotropic kainate 4 (Excitatory amino acid receptor 1) (EAA1) (Glutamate receptor KA-1) (KA1)
Observed Band	105kD
Cell Pathway	Cell membrane; Multi-pass membrane protein. Cell junction, synapse, postsynaptic cell membrane; Multi-pass membrane protein.
Tissue Specificity	Hippocampus, Kidney,
Function	function: Receptor for glutamate. L-glutamate acts as an excitatory neurotransmitter at many synapses in the central nervous system. The postsynaptic actions of Glu are mediated by a variety of receptors that are named according to their selective agonists. similarity: Belongs to the glutamate-gated ion channel (TC 1.A.10) family. subunit: Forms a heteromeric channel with GRIK1 or GRIK3.
Background	This gene encodes a protein that belongs to the glutamate-gated ionic channel family. Glutamate functions as the major excitatory neurotransmitter in the central nervous system through activation of ligand-gated ion channels and G protein-coupled membrane receptors. The protein encoded by this gene forms functional heteromeric kainate-preferring ionic channels with the subunits encoded by related gene family members. Alternatively spliced transcript variants encoding different isoforms have been found for this gene. [provided by RefSeq, Sep 2013],

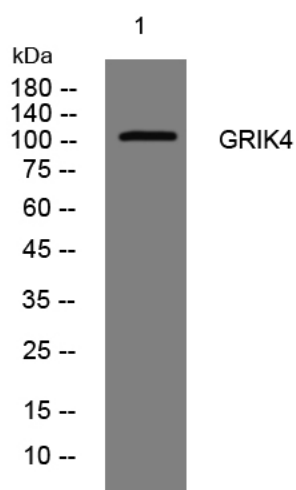
matters needing attention

Avoid repeated freezing and thawing!

Usage suggestions

This product can be used in immunological reaction related experiments. For more information, please consult technical personnel.

Products Images



Western blot analysis of lysates from HeLa cells, primary antibody was diluted at 1:1000, 4° over night