



GTD2A rabbit pAb

Catalog No	YP-Ab-08087
Isotype	IgG
Reactivity	Human;Rat;Mouse;
Applications	WB
Gene Name	GTF2IRD2 GTF2IRD2A
Protein Name	GTD2A
Immunogen	Synthesized peptide derived from human GTD2A AA range: 529-579
Specificity	This antibody detects endogenous levels of GTD2A at Human
Formulation	Liquid in PBS containing 50% glycerol, 0.5% BSA and 0.202% sodium azide.
Source	Polyclonal, Rabbit,IgG
Purification	The antibody was affinity-purified from rabbit serum by affinity-chromatography using specific immunogen.
Dilution	WB 1:500-2000
Concentration	1 mg/ml
Purity	≥90%
Storage Stability	-20°C/1 year
Synonyms	General transcription factor II-I repeat domain-containing protein 2A (GTF2I repeat domain-containing protein 2A) (Transcription factor GTF2IRD2-alpha)
Observed Band	105kD
Cell Pathway	Nucleus.
Tissue Specificity	Ubiquitous.
Function	miscellaneous:GTF2IRD2 is a gene located in the Williams-Beuren syndrome (WBS) critical region. WBS is the result of a chromosomal microdeletion 7q11.23 thought to arise as a consequence of unequal crossing over between highly homologous low-copy repeat sequences flanking the deleted region. Since GTF2IRD2 maps within this duplicated region, more than one copy of the gene was identified. WBS is a rare developmental disorder characterized by distinctive dysmorphic face, mild growth retardation, supraaortic stenosis and infantile hypercalcemia.,similarity:Belongs to the TFII-I family.,similarity:Contains 2 GTF2I-like repeats.,tissue specificity:Ubiquitous.,
Background	This gene is one of several closely related genes on chromosome 7 encoding proteins containing helix-loop-helix motifs. These proteins may function as regulators of transcription. The encoded protein is unique in that its C-terminus is derived from CHARLIE8 transposable element sequence. This gene is located in a region of chromosome 7 that is deleted in Williams-Beuren syndrome, and loss



of this locus may contribute to the cognitive phenotypes observed in this disease. Alternative splicing results in multiple transcript variants. [provided by RefSeq, Jul 2013],

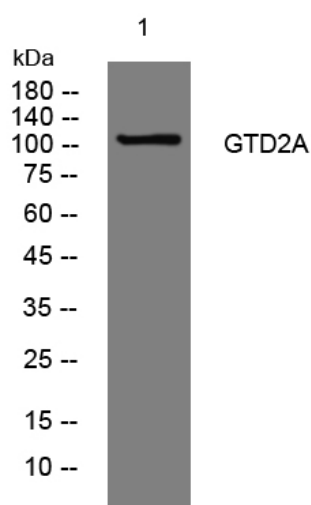
matters needing attention

Avoid repeated freezing and thawing!

Usage suggestions

This product can be used in immunological reaction related experiments. For more information, please consult technical personnel.

Products Images



Western blot analysis of lysates from HpeG2 cells, primary antibody was diluted at 1:1000, 4°over night