

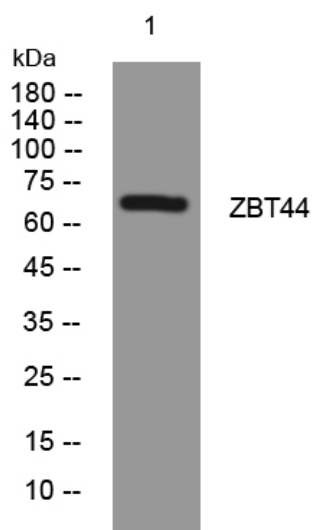


# ZBT44 rabbit pAb

<b>Catalog No</b>	YP-Ab-08074
<b>Isotype</b>	IgG
<b>Reactivity</b>	Human; Mouse; Rat
<b>Applications</b>	WB
<b>Gene Name</b>	ZBTB44 BTBD15 ZNF851
<b>Protein Name</b>	ZBT44
<b>Immunogen</b>	Synthesized peptide derived from human ZBT44 AA range: 201-251
<b>Specificity</b>	This antibody detects endogenous levels of ZBT44 at Human/Mouse/Rat
<b>Formulation</b>	Liquid in PBS containing 50% glycerol, 0.5% BSA and 0.189% sodium azide.
<b>Source</b>	Polyclonal, Rabbit, IgG
<b>Purification</b>	The antibody was affinity-purified from rabbit serum by affinity-chromatography using specific immunogen.
<b>Dilution</b>	WB 1:500-2000
<b>Concentration</b>	1 mg/ml
<b>Purity</b>	≥90%
<b>Storage Stability</b>	-20°C/1 year
<b>Synonyms</b>	Zinc finger and BTB domain-containing protein 44 (BTB/POZ domain-containing protein 15) (Zinc finger protein 851)
<b>Observed Band</b>	65kD
<b>Cell Pathway</b>	Nucleus .
<b>Tissue Specificity</b>	Blood, Brain, Liver, Testis,
<b>Function</b>	function: May be involved in transcriptional regulation., PTM: Phosphorylated upon DNA damage, probably by ATM or ATR., similarity: Contains 1 BTB (POZ) domain., similarity: Contains 4 C2H2-type zinc fingers.,
<b>Background</b>	
<b>matters needing attention</b>	Avoid repeated freezing and thawing!
<b>Usage suggestions</b>	This product can be used in immunological reaction related experiments. For more information, please consult technical personnel.



## Products Images



Western blot analysis of lysates from HeLa cells,  
primary antibody was diluted at 1:1000, 4°over night