



LAT4 rabbit pAb

Catalog No	YP-Ab-08053
Isotype	IgG
Reactivity	Human; Mouse
Applications	WB
Gene Name	SLC43A2 LAT4 PP7664
Protein Name	LAT4
Immunogen	Synthesized peptide derived from human LAT4 AA range: 122-172
Specificity	This antibody detects endogenous levels of LAT4 at Human/Mouse
Formulation	Liquid in PBS containing 50% glycerol, 0.5% BSA and 0.167% sodium azide.
Source	Polyclonal, Rabbit,IgG
Purification	The antibody was affinity-purified from rabbit serum by affinity-chromatography using specific immunogen.
Dilution	WB 1:500-2000
Concentration	1 mg/ml
Purity	≥90%
Storage Stability	-20°C/1 year
Synonyms	Large neutral amino acids transporter small subunit 4 (L-type amino acid transporter 4) (Solute carrier family 43 member 2)
Observed Band	60kD
Cell Pathway	Membrane ; Multi-pass membrane protein .
Tissue Specificity	Detected in several tissues with higher expression in placenta, kidney and peripheral blood leukocytes. In the kidney, is detected in epithelial cells of the distal tubule and collecting duct. In the intestine, is expressed mainly in crypt cells of the intestinal microvilli and epithelial cells in the base of the villus.
Function	function:Sodium-, chloride, pH-independent high affinity transport of large neutral amino acids.,PTM:Glycosylated.,similarity:Belongs to the SLC43A transporter (TC 2.A.1.44) family.,tissue specificity:Detected in several tissues with, higher expression in placenta, kidney and peripheral blood leukocytes. In the kidney is detected in epithelial cells of the distal tubule and collecting duct. In the intestin is expressed mainly in crypt cells of the intestinal microvilli ans epithelial cells in the base of the villus.,
Background	This gene encodes a member of the L-amino acid transporter-3 or SLC43 family of transporters. The encoded protein mediates sodium-, chloride-, and pH-independent transport of L-isomers of neutral amino acids, including leucine, phenylalanine, valine and methionine. This protein may contribute to the transfer of amino acids across the placental membrane to the fetus. [provided by RefSeq,



Mar 2016],

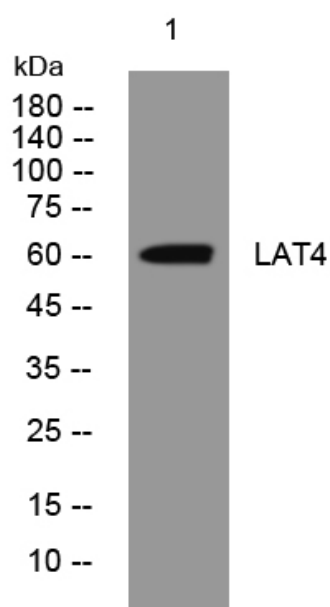
matters needing attention

Avoid repeated freezing and thawing!

Usage suggestions

This product can be used in immunological reaction related experiments. For more information, please consult technical personnel.

Products Images



Western blot analysis of lysates from Hela cells, primary antibody was diluted at 1:1000, 4° over night