

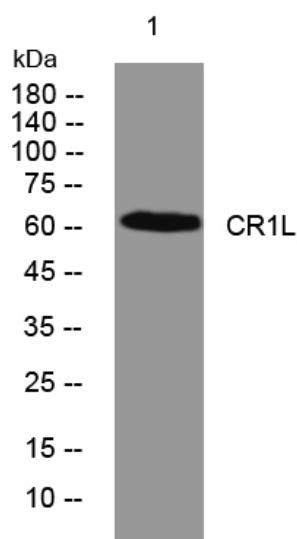


CR1L rabbit pAb

Catalog No	YP-Ab-08049
Isotype	IgG
Reactivity	Human; Mouse; Rat
Applications	WB
Gene Name	CR1L
Protein Name	CR1L
Immunogen	Synthesized peptide derived from human CR1L AA range: 45-95
Specificity	This antibody detects endogenous levels of CR1L at Human/Mouse/Rat
Formulation	Liquid in PBS containing 50% glycerol, 0.5% BSA and 0.163% sodium azide.
Source	Polyclonal, Rabbit, IgG
Purification	The antibody was affinity-purified from rabbit serum by affinity-chromatography using specific immunogen.
Dilution	WB 1:500-2000
Concentration	1 mg/ml
Purity	≥90%
Storage Stability	-20°C/1 year
Synonyms	Complement component receptor 1-like protein (Complement C4b-binding protein CR-1-like protein)
Observed Band	60kD
Cell Pathway	Cytoplasm . Membrane . Secreted . Predominantly found in association with the membrane fraction, but also located in the cytoplasm and in the supernatant.
Tissue Specificity	Expressed in fetal liver and to a lesser extent in fetal spleen and thymus. Expression appears to be limited to hematopoietic and fetal lymphoid tissue.
Function	similarity: Belongs to the receptors of complement activation (RCA) family., similarity: Contains 8 Sushi (CCP/SCR) domains., subcellular location: Predominantly found in association with the membrane fraction, but also located in the cytoplasm and in the supernatant., subunit: Interacts with iC4 (methylamine-treated C4) but not for iC3 (methylamine-treated C3)., tissue specificity: Expressed in fetal liver and to a lesser extent in fetal spleen and thymus. Expression appears to be limited to hematopoietic and fetal lymphoid tissue.,
Background	
matters needing attention	Avoid repeated freezing and thawing!

Usage suggestions

This product can be used in immunological reaction related experiments. For more information, please consult technical personnel.

Products Images

Western blot analysis of lysates from VEC cells,
primary antibody was diluted at 1:1000, 4° over night