

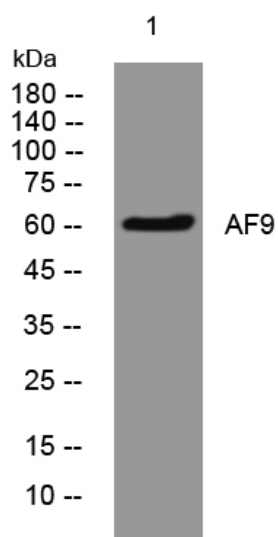


AF9 rabbit pAb

| | |
|----------------------------------|---|
| Catalog No | YP-Ab-08039 |
| Isotype | IgG |
| Reactivity | Human; Mouse |
| Applications | WB |
| Gene Name | MLLT3 AF9 YEATS3 |
| Protein Name | AF9 |
| Immunogen | Synthesized peptide derived from human AF9 AA range: 328-378 |
| Specificity | This antibody detects endogenous levels of AF9 at Human/Mouse |
| Formulation | Liquid in PBS containing 50% glycerol, 0.5% BSA and 0.153% sodium azide. |
| Source | Polyclonal, Rabbit,IgG |
| Purification | The antibody was affinity-purified from rabbit serum by affinity-chromatography using specific immunogen. |
| Dilution | WB 1:500-2000 |
| Concentration | 1 mg/ml |
| Purity | ≥90% |
| Storage Stability | -20°C/1 year |
| Synonyms | Protein AF-9 (ALL1-fused gene from chromosome 9 protein) (Myeloid/lymphoid or mixed-lineage leukemia translocated to chromosome 3 protein) (YEATS domain-containing protein 3) |
| Observed Band | 60kD |
| Cell Pathway | Nucleus . Chromosome . Colocalizes with acylated histone H3 (PubMed:25417107, PubMed:27105114). Colocalizes with histone H3 crotonylated at 'Lys-18' (H3K18cr) (PubMed:27105114). . |
| Tissue Specificity | Enriched in undifferentiated hematopoietic stem cells in fetal liver, cord blood and bone marrow. |
| Function | disease:A chromosomal aberration involving MLLT3 is associated with acute leukemias. Translocation t(9;11)(p22;q23) with MLL/HRX. The result is a rogue activator protein.,similarity:Contains 1 YEATS domain.,subunit:Interacts with BCOR. Interacts with CBX8., |
| Background | |
| matters needing attention | Avoid repeated freezing and thawing! |

Usage suggestions

This product can be used in immunological reaction related experiments. For more information, please consult technical personnel.

Products Images

Western blot analysis of lysates from U2OS cells,
primary antibody was diluted at 1:1000, 4° over night