



LCTL rabbit pAb

Catalog No	YP-Ab-08029
Isotype	IgG
Reactivity	Human; Mouse
Applications	WB
Gene Name	LCTL KLPH UNQ3022/PRO9820
Protein Name	LCTL
Immunogen	Synthesized peptide derived from human LCTL AA range: 450-500
Specificity	This antibody detects endogenous levels of LCTL at Human/Mouse
Formulation	Liquid in PBS containing 50% glycerol, 0.5% BSA and 0.143% sodium azide.
Source	Polyclonal, Rabbit,IgG
Purification	The antibody was affinity-purified from rabbit serum by affinity-chromatography using specific immunogen.
Dilution	WB 1:500-2000
Concentration	1 mg/ml
Purity	≥90%
Storage Stability	-20°C/1 year
Synonyms	Lactase-like protein (Klotho/lactase-phlorizin hydrolase-related protein)
Observed Band	60kD
Cell Pathway	Endoplasmic reticulum membrane ; Single-pass membrane protein .
Tissue Specificity	
Function	caution:Probably inactive as a glycosidase since it lacks the essential active site Glu at position 201.,similarity:Belongs to the glycosyl hydrolase 1 family.,similarity:Belongs to the glycosyl hydrolase 1 family. Klotho subfamily.,
Background	This gene encodes a member of family 1 glycosidases. Glycosidases are enzymes that hydrolyze glycosidic bonds and are classified into families based on primary amino acid sequence. Most members of family 1 have two conserved glutamic acid residues, which are required for enzymatic activity. The mouse ortholog of this protein has been characterized and has a domain structure of an N-terminal signal peptide, glycosidase domain, transmembrane domain, and a short cytoplasmic tail. It lacks one of the conserved glutamic acid residues important for catalysis, and its function remains to be determined (PMID: 12084582). Alternative splicing results in multiple transcript variants. [provided by RefSeq, Jun 2013],

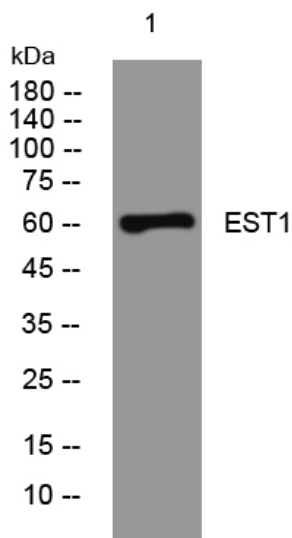
matters needing attention

Avoid repeated freezing and thawing!

Usage suggestions

This product can be used in immunological reaction related experiments. For more information, please consult technical personnel.

Products Images



Western blot analysis of lysates from MCF-7 cells, primary antibody was diluted at 1:1000, 4° over night