



ZKSC1 rabbit pAb

Catalog No	YP-Ab-07998
Isotype	IgG
Reactivity	Human; Mouse; Rat
Applications	WB
Gene Name	ZKSCAN1 KOX18 ZNF139 ZNF36
Protein Name	ZKSC1
Immunogen	Synthesized peptide derived from human ZKSC1 AA range: 313-363
Specificity	This antibody detects endogenous levels of ZKSC1 at Human/Mouse/Rat
Formulation	Liquid in PBS containing 50% glycerol, 0.5% BSA and 0.112% sodium azide.
Source	Polyclonal, Rabbit, IgG
Purification	The antibody was affinity-purified from rabbit serum by affinity-chromatography using specific immunogen.
Dilution	WB 1:500-2000
Concentration	1 mg/ml
Purity	≥90%
Storage Stability	-20°C/1 year
Synonyms	Zinc finger protein with KRAB and SCAN domains 1 (Zinc finger protein 139) (Zinc finger protein 36) (Zinc finger protein KOX18)
Observed Band	60kD
Cell Pathway	Nucleus .
Tissue Specificity	Brain, Epithelium, Eye, Fetal kidney, Insulinoma, Lung, Lymphoid, Pancreas, Spleen,
Function	function: May be involved in transcriptional regulation., PTM: Phosphorylated upon DNA damage, probably by ATM or ATR., similarity: Belongs to the krueppel C2H2-type zinc-finger protein family., similarity: Contains 1 KRAB domain., similarity: Contains 1 SCAN box domain., similarity: Contains 6 C2H2-type zinc fingers.,
Background	The ZKSCAN1 gene encodes a transcriptional regulator of the KRAB (Krueppel-associated box) subfamily of zinc finger proteins, which contain repeated Cys2-His2 (C2H2) zinc finger domains that are connected by conserved sequences, called H/C links (summarized by Tommerup and Vissing, 1995 [PubMed 7557990]). Transcriptional regulatory proteins containing tandemly repeated zinc finger domains are thought to be involved in both normal and abnormal cellular proliferation and differentiation. See ZNF91 (MIM 603971) for general information on zinc finger proteins. [supplied by OMIM, Jul 2010],

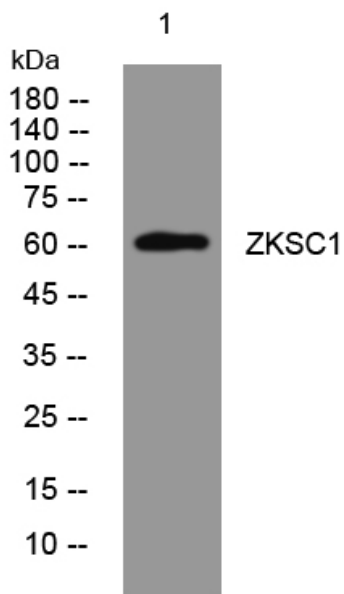
matters needing attention

Avoid repeated freezing and thawing!

Usage suggestions

This product can be used in immunological reaction related experiments. For more information, please consult technical personnel.

Products Images



Western blot analysis of lysates from MCF-7 cells, primary antibody was diluted at 1:1000, 4° over night