

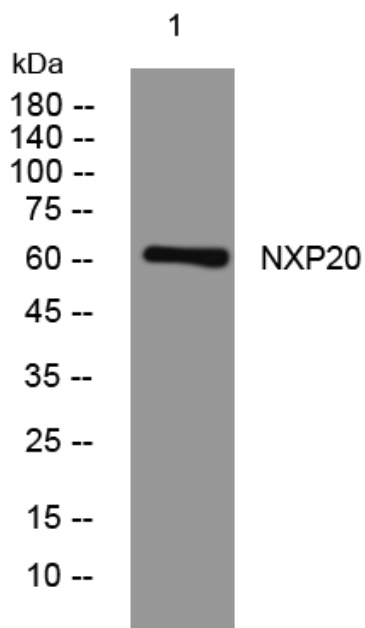


NXP20 rabbit pAb

| | |
|----------------------------------|---|
| Catalog No | YP-Ab-07996 |
| Isotype | IgG |
| Reactivity | Human; Mouse |
| Applications | WB |
| Gene Name | FAM114A1 NOXP20 |
| Protein Name | NXP20 |
| Immunogen | Synthesized peptide derived from human NXP20 AA range: 135-185 |
| Specificity | This antibody detects endogenous levels of NXP20 at Human/Mouse |
| Formulation | Liquid in PBS containing 50% glycerol, 0.5% BSA and 0.110% sodium azide. |
| Source | Polyclonal, Rabbit,IgG |
| Purification | The antibody was affinity-purified from rabbit serum by affinity-chromatography using specific immunogen. |
| Dilution | WB 1:500-2000 |
| Concentration | 1 mg/ml |
| Purity | ≥90% |
| Storage Stability | -20°C/1 year |
| Synonyms | Protein NOXP20 (Nervous system overexpressed protein 20) (Protein FAM114A1) |
| Observed Band | 60kD |
| Cell Pathway | Cytoplasm . |
| Tissue Specificity | Colon,Kidney,Salivary gland,Trachea, |
| Function | function:May play a role in neuronal cell development.,similarity:Belongs to the FAM114 family., |
| Background | |
| matters needing attention | Avoid repeated freezing and thawing! |
| Usage suggestions | This product can be used in immunological reaction related experiments. For more information, please consult technical personnel. |



Products Images



Western blot analysis of lysates from SW480 cells,
primary antibody was diluted at 1:1000, 4° over night