



# SPTC2 rabbit pAb

<b>Catalog No</b>	YP-Ab-07986
<b>Isotype</b>	IgG
<b>Reactivity</b>	Human; Mouse
<b>Applications</b>	WB
<b>Gene Name</b>	SPTLC2 KIAA0526 LCB2
<b>Protein Name</b>	SPTC2
<b>Immunogen</b>	Synthesized peptide derived from human SPTC2 AA range: 273-323
<b>Specificity</b>	This antibody detects endogenous levels of SPTC2 at Human/Mouse
<b>Formulation</b>	Liquid in PBS containing 50% glycerol, 0.5% BSA and 0.100% sodium azide.
<b>Source</b>	Polyclonal, Rabbit,IgG
<b>Purification</b>	The antibody was affinity-purified from rabbit serum by affinity-chromatography using specific immunogen.
<b>Dilution</b>	WB 1:500-2000
<b>Concentration</b>	1 mg/ml
<b>Purity</b>	≥90%
<b>Storage Stability</b>	-20°C/1 year
<b>Synonyms</b>	Serine palmitoyltransferase 2 (EC 2.3.1.50) (Long chain base biosynthesis protein 2) (LCB 2) (Long chain base biosynthesis protein 2a) (LCB2a) (Serine-palmitoyl-CoA transferase 2) (SPT 2)
<b>Observed Band</b>	60kD
<b>Cell Pathway</b>	Endoplasmic reticulum membrane ; Single-pass membrane protein .
<b>Tissue Specificity</b>	Widely expressed.
<b>Function</b>	catalytic activity:Palmitoyl-CoA + L-serine = CoA + 3-dehydro-D-sphinganine + CO(2).,cofactor:Pyridoxal phosphate.,pathway:Lipid metabolism; sphingolipid metabolism.,similarity:Belongs to the class-II pyridoxal-phosphate-dependent aminotransferase family.,subunit:SPTLC1, SPTLC2 and SPTLC3 may encode subunits of the enzyme.,tissue specificity:Widely expressed.,
<b>Background</b>	This gene encodes a long chain base subunit of serine palmitoyltransferase. Serine palmitoyltransferase, which consists of two different subunits, is the key enzyme in sphingolipid biosynthesis. It catalyzes the pyridoxal-5-prime-phosphate-dependent condensation of L-serine and palmitoyl-CoA to 3-oxosphinganine. Mutations in this gene were identified in patients with hereditary sensory neuropathy type I. [provided by RefSeq, Mar 2011],



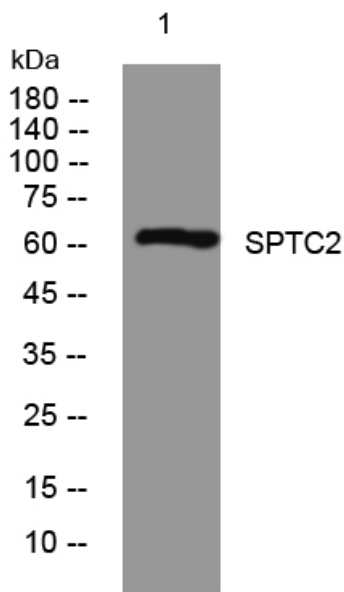
**matters needing attention**

Avoid repeated freezing and thawing!

**Usage suggestions**

This product can be used in immunological reaction related experiments. For more information, please consult technical personnel.

**Products Images**



Western blot analysis of lysates from SH-SY5Y cells, primary antibody was diluted at 1:1000, 4°over night