

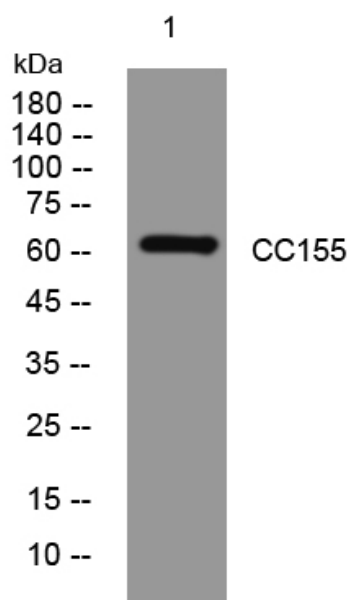


# CC155 rabbit pAb

<b>Catalog No</b>	YP-Ab-07980
<b>Isotype</b>	IgG
<b>Reactivity</b>	Human;Rat;Mouse;
<b>Applications</b>	WB
<b>Gene Name</b>	CCDC155
<b>Protein Name</b>	CC155
<b>Immunogen</b>	Synthesized peptide derived from human CC155 AA range: 299-349
<b>Specificity</b>	This antibody detects endogenous levels of CC155 at Human
<b>Formulation</b>	Liquid in PBS containing 50% glycerol, 0.5% BSA and 0.94% sodium azide.
<b>Source</b>	Polyclonal, Rabbit,IgG
<b>Purification</b>	The antibody was affinity-purified from rabbit serum by affinity-chromatography using specific immunogen.
<b>Dilution</b>	WB 1:500-2000
<b>Concentration</b>	1 mg/ml
<b>Purity</b>	≥90%
<b>Storage Stability</b>	-20°C/1 year
<b>Synonyms</b>	Coiled-coil domain-containing protein 155
<b>Observed Band</b>	60kD
<b>Cell Pathway</b>	Nucleus outer membrane ; Single-pass type IV membrane protein ; Cytoplasmic side . Nucleus . Chromosome, telomere . Localized exclusively at telomeres from the leptotene to diplotene stages. Colocalizes with SUN2 at sites of telomere attachment in meiocytes. At oocyte MI stage localized around the spindle, at MII stage localized to the spindle poles. .
<b>Tissue Specificity</b>	Brain,Testis,
<b>Function</b>	
<b>Background</b>	
<b>matters needing attention</b>	Avoid repeated freezing and thawing!
<b>Usage suggestions</b>	This product can be used in immunological reaction related experiments. For more information, please consult technical personnel.



## Products Images



Western blot analysis of lysates from HCT116 cells,  
primary antibody was diluted at 1:1000, 4°over night