

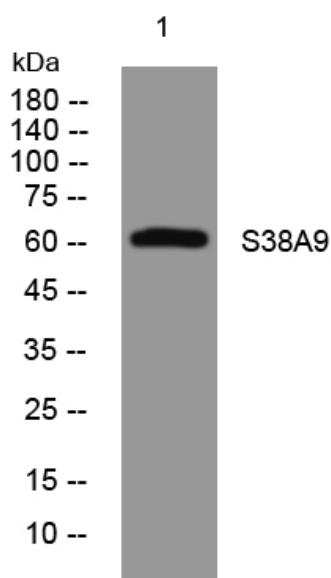


S38A9 rabbit pAb

Catalog No	YP-Ab-07975
Isotype	IgG
Reactivity	Human; Mouse; Rat
Applications	WB
Gene Name	SLC38A9
Protein Name	S38A9
Immunogen	Synthesized peptide derived from human S38A9 AA range: 264-314
Specificity	This antibody detects endogenous levels of S38A9 at Human/Mouse/Rat
Formulation	Liquid in PBS containing 50% glycerol, 0.5% BSA and 0.89% sodium azide.
Source	Polyclonal, Rabbit, IgG
Purification	The antibody was affinity-purified from rabbit serum by affinity-chromatography using specific immunogen.
Dilution	WB 1:500-2000
Concentration	1 mg/ml
Purity	≥90%
Storage Stability	-20°C/1 year
Synonyms	Putative sodium-coupled neutral amino acid transporter 9
Observed Band	60kD
Cell Pathway	Lysosome membrane ; Multi-pass membrane protein . Late endosome membrane ; Multi-pass membrane protein .
Tissue Specificity	Fetal kidney, Liver, Placenta, Testis,
Function	function: Putative sodium-dependent amino acid/proton antiporter., similarity: Belongs to the amino acid/polyamine transporter 2 family.,
Background	
matters needing attention	Avoid repeated freezing and thawing!
Usage suggestions	This product can be used in immunological reaction related experiments. For more information, please consult technical personnel.



Products Images



Western blot analysis of lysates from Hela cells,
primary antibody was diluted at 1:1000, 4°over night