

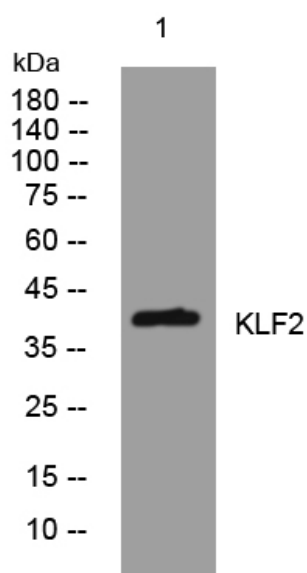


KLF2 rabbit pAb

| | |
|----------------------------------|--|
| Catalog No | YP-Ab-07956 |
| Isotype | IgG |
| Reactivity | Human; Mouse; Rat |
| Applications | WB |
| Gene Name | KLF2 LKLF |
| Protein Name | KLF2 |
| Immunogen | Synthesized peptide derived from human KLF2 AA range: 196-246 |
| Specificity | This antibody detects endogenous levels of KLF2 at Human/Mouse/Rat |
| Formulation | Liquid in PBS containing 50% glycerol, 0.5% BSA and 0.70% sodium azide. |
| Source | Polyclonal, Rabbit, IgG |
| Purification | The antibody was affinity-purified from rabbit serum by affinity-chromatography using specific immunogen. |
| Dilution | WB 1:500-2000 |
| Concentration | 1 mg/ml |
| Purity | ≥90% |
| Storage Stability | -20°C/1 year |
| Synonyms | Krueppel-like factor 2 (Lung krueppel-like factor) |
| Observed Band | 38kD |
| Cell Pathway | Nucleus . |
| Tissue Specificity | Brain, Hair follicle dermal papilla, Lung, Spleen, |
| Function | function: Binds to the CACCC box in the beta-globin gene promoter and activates transcription., similarity: Belongs to the krueppel C2H2-type zinc-finger protein family., similarity: Contains 3 C2H2-type zinc fingers., subunit: Interacts with WWP1., |
| Background | Kruppel-like factors (KLFs) are a family of broadly expressed zinc finger transcription factors. KLF2 regulates T-cell trafficking by promoting expression of the lipid-binding receptor S1P1 (S1PR1; MIM 601974) and the selectin CD62L (SELL; MIM 153240) (summary by Weinreich et al., 2009 [PubMed 19592277]). [supplied by OMIM, Feb 2011], |
| matters needing attention | Avoid repeated freezing and thawing! |

Usage suggestions

This product can be used in immunological reaction related experiments. For more information, please consult technical personnel.

Products Images

Western blot analysis of lysates from HeLa cells,
primary antibody was diluted at 1:1000, 4° over night