

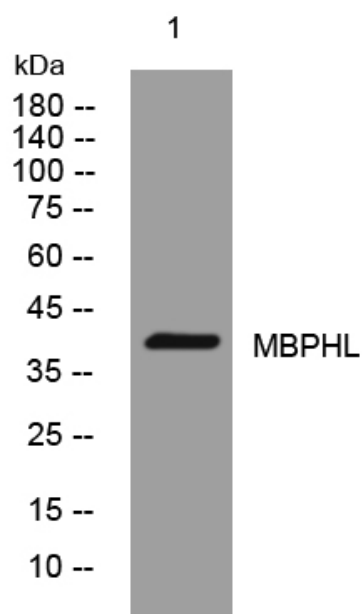


MBPHL rabbit pAb

Catalog No	YP-Ab-07945
Isotype	IgG
Reactivity	Human; Mouse; Rat
Applications	WB
Gene Name	MYBPHL
Protein Name	MBPHL
Immunogen	Synthesized peptide derived from human MBPHL AA range: 13-63
Specificity	This antibody detects endogenous levels of MBPHL at Human/Mouse/Rat
Formulation	Liquid in PBS containing 50% glycerol, 0.5% BSA and 0.59% sodium azide.
Source	Polyclonal, Rabbit, IgG
Purification	The antibody was affinity-purified from rabbit serum by affinity-chromatography using specific immunogen.
Dilution	WB 1:500-2000
Concentration	1 mg/ml
Purity	≥90%
Storage Stability	-20°C/1 year
Synonyms	Myosin-binding protein H-like
Observed Band	38kD
Cell Pathway	Cytoplasm, myofibril, sarcomere .
Tissue Specificity	Expressed in heart, with higher expression in the atria. ; [Isoform 1]: Expressed in left atrium and ventricle, arteria mammaria interna and skeletal muscle. ; [Isoform 2]: Expressed specifically en the left atrium.
Function	similarity:Belongs to the immunoglobulin superfamily. MyBP family.,similarity:Contains 1 fibronectin type-III domain.,similarity:Contains 2 Ig-like C2-type (immunoglobulin-like) domains.,
Background	This gene encodes a protein with two immunoglobulin superfamily domains and a fibronectin 3 domain. Alternative splicing results in multiple transcript variants. [provided by RefSeq, May 2012],
matters needing attention	Avoid repeated freezing and thawing!
Usage suggestions	This product can be used in immunological reaction related experiments. For more information, please consult technical personnel.



Products Images



Western blot analysis of lysates from U2OS cells,
primary antibody was diluted at 1:1000, 4°over night