

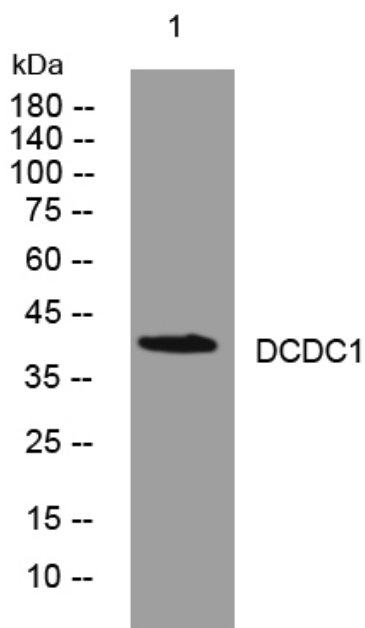


DCDC1 rabbit pAb

Catalog No	YP-Ab-07936
Isotype	IgG
Reactivity	Human;Rat;Mouse;
Applications	WB
Gene Name	DCDC1
Protein Name	DCDC1
Immunogen	Synthesized peptide derived from human DCDC1 AA range: 111-161
Specificity	This antibody detects endogenous levels of DCDC1 at Human
Formulation	Liquid in PBS containing 50% glycerol, 0.5% BSA and 0.50% sodium azide.
Source	Polyclonal, Rabbit,IgG
Purification	The antibody was affinity-purified from rabbit serum by affinity-chromatography using specific immunogen.
Dilution	WB 1:500-2000
Concentration	1 mg/ml
Purity	≥90%
Storage Stability	-20°C/1 year
Synonyms	Doublecortin domain-containing protein 1
Observed Band	38kD
Cell Pathway	intracellular,cytoplasm,
Tissue Specificity	Fetal brain,
Function	similarity:Contains 1 doublecortin domain.,tissue specificity:Highly expressed in testis. Lower levels of expression in lung, kidney, and pancreas. Higher expression in fetal brain than in adult brain.,
Background	This gene encodes a member of the doublecortin family. The protein encoded by this gene is a hydrophilic, intracellular protein. It contains a single doublecortin domain and is unable to bind microtubules and to regulate microtubule polymerization. This gene is mainly expressed in adult testis. It does not have a mouse homolog. [provided by RefSeq, Sep 2010],
matters needing attention	Avoid repeated freezing and thawing!
Usage suggestions	This product can be used in immunological reaction related experiments. For more information, please consult technical personnel.



Products Images



Western blot analysis of lysates from MCF-7 cells,
primary antibody was diluted at 1:1000, 4°over night