

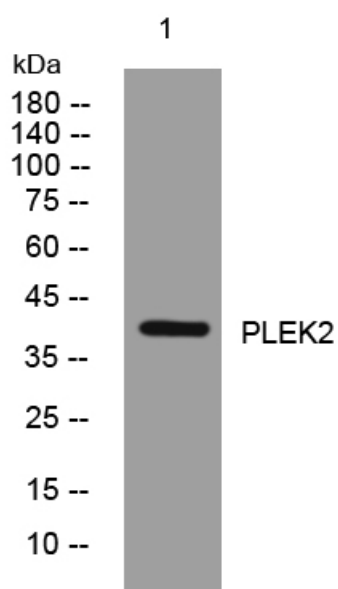


# PLEK2 rabbit pAb

<b>Catalog No</b>	YP-Ab-07924
<b>Isotype</b>	IgG
<b>Reactivity</b>	Human; Mouse
<b>Applications</b>	WB
<b>Gene Name</b>	PLEK2
<b>Protein Name</b>	PLEK2
<b>Immunogen</b>	Synthesized peptide derived from human PLEK2 AA range: 5-55
<b>Specificity</b>	This antibody detects endogenous levels of PLEK2 at Human/Mouse
<b>Formulation</b>	Liquid in PBS containing 50% glycerol, 0.5% BSA and 0.38% sodium azide.
<b>Source</b>	Polyclonal, Rabbit,IgG
<b>Purification</b>	The antibody was affinity-purified from rabbit serum by affinity-chromatography using specific immunogen.
<b>Dilution</b>	WB 1:500-2000
<b>Concentration</b>	1 mg/ml
<b>Purity</b>	≥90%
<b>Storage Stability</b>	-20°C/1 year
<b>Synonyms</b>	Pleckstrin-2
<b>Observed Band</b>	38kD
<b>Cell Pathway</b>	Cell projection, lamellipodium membrane; Peripheral membrane protein. Cytoplasm, cytoskeleton.
<b>Tissue Specificity</b>	Cervix,Ovary,
<b>Function</b>	function:May help orchestrate cytoskeletal arrangement. Contribute to lamellipodia formation.,similarity:Contains 1 DEP domain.,similarity:Contains 2 PH domains.,
<b>Background</b>	The protein encoded by this gene associates with membrane-bound phosphatidylinositols generated by phosphatidylinositol 3-kinase. The encoded protein then interacts with the actin cytoskeleton to induce cell spreading. In conjunction with complement component 1, q subcomponent, B chain (C1QB), this gene shows an increase in expression in melanoma cells and may serve as an accurate biomarker for the disease. [provided by RefSeq, Dec 2015],
<b>matters needing attention</b>	Avoid repeated freezing and thawing!

**Usage suggestions**

This product can be used in immunological reaction related experiments. For more information, please consult technical personnel.

**Products Images**

Western blot analysis of lysates from MCF-7 cells,  
primary antibody was diluted at 1:1000, 4° over night