



SAA1 Polyclonal Antibody

Catalog No	YP-Ab-07880
Isotype	IgG
Reactivity	Human;Mouse
Applications	WB;ELISA
Gene Name	SAA1
Protein Name	Serum amyloid A-1 protein (SAA) [Cleaved into: Amyloid protein A (Amyloid fibril protein AA); Serum amyloid protein A(2-104); Serum amyloid protein A(3-104); Serum amyloid protein A(2-103); Serum amyloid protein A(1-104); Serum amyloid protein A(1-103); Serum amyloid protein A(1-102); Serum amyloid protein A(1-101); Serum amyloid protein A(1-100); Serum amyloid protein A(1-99); Serum amyloid protein A(1-98); Serum amyloid protein A(1-97); Serum amyloid protein A(1-96); Serum amyloid protein A(1-95); Serum amyloid protein A(1-94); Serum amyloid protein A(1-93); Serum amyloid protein A(1-92); Serum amyloid protein A(1-91); Serum amyloid protein A(1-90); Serum amyloid protein A(1-89); Serum amyloid protein A(1-88); Serum amyloid protein A(1-87); Serum amyloid protein A(1-86); Serum amyloid protein A(1-85); Serum amyloid protein A(1-84); Serum amyloid protein A(1-83); Serum amyloid protein A(1-82); Serum amyloid protein A(1-81); Serum amyloid protein A(1-80); Serum amyloid protein A(1-79); Serum amyloid protein A(1-78); Serum amyloid protein A(1-77); Serum amyloid protein A(1-76); Serum amyloid protein A(1-75); Serum amyloid protein A(1-74); Serum amyloid protein A(1-73); Serum amyloid protein A(1-72); Serum amyloid protein A(1-71); Serum amyloid protein A(1-70); Serum amyloid protein A(1-69); Serum amyloid protein A(1-68); Serum amyloid protein A(1-67); Serum amyloid protein A(1-66); Serum amyloid protein A(1-65); Serum amyloid protein A(1-64); Serum amyloid protein A(1-63); Serum amyloid protein A(1-62); Serum amyloid protein A(1-61); Serum amyloid protein A(1-60); Serum amyloid protein A(1-59); Serum amyloid protein A(1-58); Serum amyloid protein A(1-57); Serum amyloid protein A(1-56); Serum amyloid protein A(1-55); Serum amyloid protein A(1-54); Serum amyloid protein A(1-53); Serum amyloid protein A(1-52); Serum amyloid protein A(1-51); Serum amyloid protein A(1-50); Serum amyloid protein A(1-49); Serum amyloid protein A(1-48); Serum amyloid protein A(1-47); Serum amyloid protein A(1-46); Serum amyloid protein A(1-45); Serum amyloid protein A(1-44); Serum amyloid protein A(1-43); Serum amyloid protein A(1-42); Serum amyloid protein A(1-41); Serum amyloid protein A(1-40); Serum amyloid protein A(1-39); Serum amyloid protein A(1-38); Serum amyloid protein A(1-37); Serum amyloid protein A(1-36); Serum amyloid protein A(1-35); Serum amyloid protein A(1-34); Serum amyloid protein A(1-33); Serum amyloid protein A(1-32); Serum amyloid protein A(1-31); Serum amyloid protein A(1-30); Serum amyloid protein A(1-29); Serum amyloid protein A(1-28); Serum amyloid protein A(1-27); Serum amyloid protein A(1-26); Serum amyloid protein A(1-25); Serum amyloid protein A(1-24); Serum amyloid protein A(1-23); Serum amyloid protein A(1-22); Serum amyloid protein A(1-21); Serum amyloid protein A(1-20); Serum amyloid protein A(1-19); Serum amyloid protein A(1-18); Serum amyloid protein A(1-17); Serum amyloid protein A(1-16); Serum amyloid protein A(1-15); Serum amyloid protein A(1-14); Serum amyloid protein A(1-13); Serum amyloid protein A(1-12); Serum amyloid protein A(1-11); Serum amyloid protein A(1-10); Serum amyloid protein A(1-9); Serum amyloid protein A(1-8); Serum amyloid protein A(1-7); Serum amyloid protein A(1-6); Serum amyloid protein A(1-5); Serum amyloid protein A(1-4); Serum amyloid protein A(1-3); Serum amyloid protein A(1-2); Serum amyloid protein A(1-1)]
Immunogen	Synthesized peptide derived from part region of human protein AA range: 38-88
Specificity	SAA1 Polyclonal Antibody detects endogenous levels of protein.
Formulation	Liquid in PBS containing 50% glycerol, and 0.02% sodium azide.
Source	Polyclonal, Rabbit,IgG
Purification	The antibody was affinity-purified from rabbit antiserum by affinity-chromatography using epitope-specific immunogen.
Dilution	WB 1:500-2000 ELISA 1:5000-20000
Concentration	1 mg/ml
Purity	≥90%
Storage Stability	-20°C/1 year
Synonyms	
Observed Band	13kD
Cell Pathway	Secreted .
Tissue Specificity	Expressed by the liver; secreted in plasma (at protein level).
Function	disease:BOL is from a patient with Waldenstrom macroglobulinemia.,disease:JL is from a patient with ankylosing spondylitis.,disease:Reactive, secondary amyloidosis is characterized by the extracellular accumulation in various tissues of the SAA protein. These deposits are highly insoluble and resistant to proteolysis; they disrupt tissue structure and compromise function.,disease:TH is from a patient with juvenile rheumatoid arthritis.,function:Major acute phase reactant. Apolipoprotein of the HDL complex.,induction:Upon cytokine stimulation.,mass spectrometry: PubMed:12606051,mass spectrometry: PubMed:12973732,mass spectrometry:With variant Ala-70 PubMed:1463770,mass spectrometry:With variants Ala-70, Val-75, Asn-78 and 86-Leu-Thr-87 PubMed:1463770,miscellaneous:Elevated serum SSA protein levels may be associated with lung cancer.,polymorphism:Both SAA1 and SAA2 have a number of alleles



Background

This gene encodes a member of the serum amyloid A family of apolipoproteins. The encoded preproprotein is proteolytically processed to generate the mature protein. This protein is a major acute phase protein that is highly expressed in response to inflammation and tissue injury. This protein also plays an important role in HDL metabolism and cholesterol homeostasis. High levels of this protein are associated with chronic inflammatory diseases including atherosclerosis, rheumatoid arthritis, Alzheimer's disease and Crohn's disease. This protein may also be a potential biomarker for certain tumors. Alternate splicing results in multiple transcript variants that encode the same protein. A pseudogene of this gene is found on chromosome 11. [provided by RefSeq, Feb 2016],

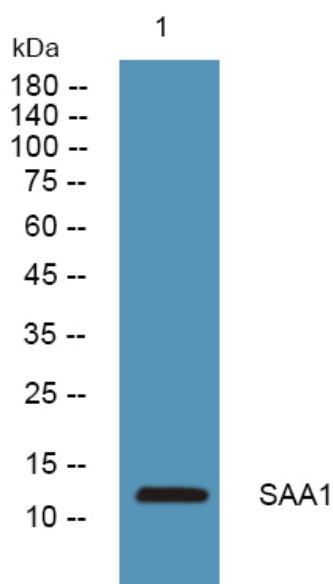
matters needing attention

Avoid repeated freezing and thawing!

Usage suggestions

This product can be used in immunological reaction related experiments. For more information, please consult technical personnel.

Products Images



Western blot analysis of lysates from K562 cells, primary antibody was diluted at 1:1000, 4° over night