



MLP3C Polyclonal Antibody

Catalog No	YP-Ab-07875
Isotype	IgG
Reactivity	Human;Rat;Mouse;
Applications	WB;ELISA
Gene Name	MAP1LC3C
Protein Name	Microtubule-associated proteins 1A/1B light chain 3C (Autophagy-related protein LC3 C) (Autophagy-related ubiquitin-like modifier LC3 C) (MAP1 light chain 3-like protein 3) (MAP1A/MAP1B light chain 3)
Immunogen	Synthesized peptide derived from part region of human protein AA range: 71-120
Specificity	MLP3C Polyclonal Antibody detects endogenous levels of protein.
Formulation	Liquid in PBS containing 50% glycerol, and 0.02% sodium azide.
Source	Polyclonal, Rabbit,IgG
Purification	The antibody was affinity-purified from rabbit antiserum by affinity-chromatography using epitope-specific immunogen.
Dilution	WB 1:500-2000 ELISA 1:5000-20000
Concentration	1 mg/ml
Purity	≥90%
Storage Stability	-20°C/1 year
Synonyms	
Observed Band	16kD
Cell Pathway	Cytoplasmic vesicle, autophagosome membrane ; Lipid-anchor . Endomembrane system ; Lipid-anchor . Cytoplasm, cytoskeleton . LC3-II binds to the autophagic membranes. .
Tissue Specificity	Most abundant in placenta, lung and ovary.
Function	function:Probably involved in formation of autophagosomal vacuoles (autophagosomes).,PTM:The precursor molecule is cleaved by APG4B/ATG4B to form the cytosolic form, LC3-I. This is activated by APG7L/ATG7, transferred to ATG3 and conjugated to phospholipid to form the membrane-bound form, LC3-II.,similarity:Belongs to the MAP1 LC3 family.,subcellular location:LC3-II binds to the autophagic membranes.,subunit:3 different light chains, LC1, LC2 and LC3, can associate with MAP1A and MAP1B proteins.,tissue specificity:Most abundant in placenta, lung and ovary.,
Background	Autophagy is a highly regulated bulk degradation process that plays an important role in cellular maintenance and development. MAP1LC3C is an ortholog of the yeast autophagosome protein Atg8 (He et al., 2003 [PubMed 12740394]).[supplied by OMIM, Nov 2010],

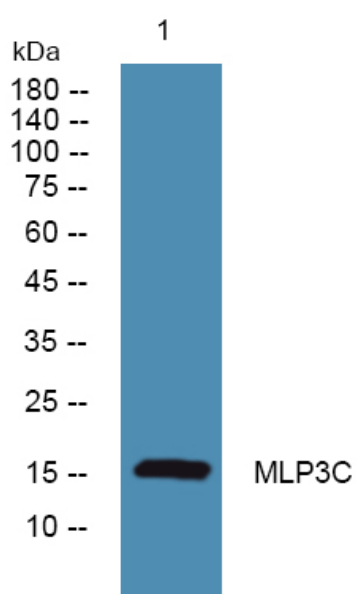
matters needing attention

Avoid repeated freezing and thawing!

Usage suggestions

This product can be used in immunological reaction related experiments. For more information, please consult technical personnel.

Products Images



Western blot analysis of lysates from SW480 cells, primary antibody was diluted at 1:1000, 4° over night