



DERL3 Polyclonal Antibody

Catalog No	YP-Ab-07867
Isotype	IgG
Reactivity	Human;Mouse
Applications	WB;ELISA
Gene Name	DERL3 C22orf14 DER3 LLN2
Protein Name	Derlin-3 (Degradation in endoplasmic reticulum protein 3) (DERtrin-3) (Der1-like protein 3)
Immunogen	Synthesized peptide derived from part region of human protein
Specificity	DERL3 Polyclonal Antibody detects endogenous levels of protein.
Formulation	Liquid in PBS containing 50% glycerol, and 0.02% sodium azide.
Source	Polyclonal, Rabbit,IgG
Purification	The antibody was affinity-purified from rabbit antiserum by affinity-chromatography using epitope-specific immunogen.
Dilution	WB 1:500-2000 ELISA 1:5000-20000
Concentration	1 mg/ml
Purity	≥90%
Storage Stability	-20°C/1 year
Synonyms	
Observed Band	25kD
Cell Pathway	Endoplasmic reticulum membrane ; Multi-pass membrane protein .
Tissue Specificity	Unlike DERL1 and DERL2, restricted to several tissues. Expressed at high levels in placenta, pancreas, spleen and small intestine.
Function	function:Functional component of endoplasmic reticulum-associated degradation (ERAD) for misfolded luminal glycoproteins, but not that of misfolded nonglycoproteins. May act by forming a channel that allows the retrotranslocation of misfolded glycoproteins into the cytosol where they are ubiquitinated and degraded by the proteasome. May mediate the interaction between VCP and the degradation substrate.,induction:Up-regulated in response to ER stress via the ERN1-XBP1 pathway of the unfolded protein response (UPR).,similarity:Belongs to the derlin family.,subunit:Forms homo- and heterooligomers with DERL2 and, to a lesser extent, with DERL1. Interacts with VCP and EDEM1.,tissue specificity:Unlike DERL1 and DERL2, restricted to several tissues. Expressed at high levels in placenta, pancreas, spleen and small intestine.,
Background	derlin 3(DERL3) Homo sapiens The protein encoded by this gene belongs to the derlin family, and resides in the endoplasmic reticulum (ER). Proteins that are unfolded or misfolded in the ER must be refolded or degraded to maintain the homeostasis of the ER. This protein appears to be involved in the degradation of



misfolded glycoproteins in the ER. Several alternatively spliced transcript variants encoding different isoforms have been identified for this gene. [provided by RefSeq, Oct 2008],

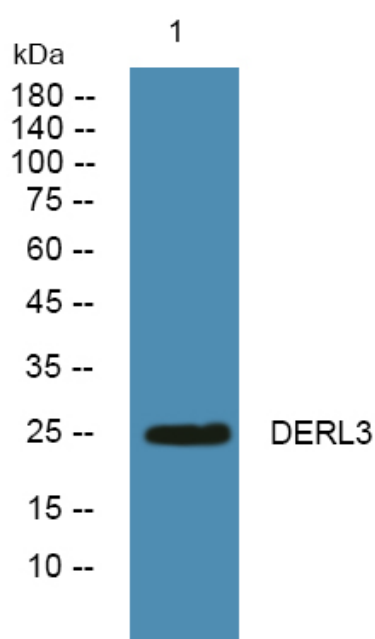
matters needing attention

Avoid repeated freezing and thawing!

Usage suggestions

This product can be used in immunological reaction related experiments. For more information, please consult technical personnel.

Products Images



Western blot analysis of lysates from U2OS cells, primary antibody was diluted at 1:1000, 4° over night