



# VAMP7 Polyclonal Antibody

<b>Catalog No</b>	YP-Ab-07842
<b>Isotype</b>	IgG
<b>Reactivity</b>	Human;Mouse;Rat
<b>Applications</b>	WB;ELISA
<b>Gene Name</b>	VAMP7 SYBL1
<b>Protein Name</b>	Vesicle-associated membrane protein 7 (VAMP-7) (Synaptobrevin-like protein 1) (Tetanus-insensitive VAMP) (Ti-VAMP)
<b>Immunogen</b>	Synthesized peptide derived from part region of human protein
<b>Specificity</b>	VAMP7 Polyclonal Antibody detects endogenous levels of protein.
<b>Formulation</b>	Liquid in PBS containing 50% glycerol, and 0.02% sodium azide.
<b>Source</b>	Polyclonal, Rabbit,IgG
<b>Purification</b>	The antibody was affinity-purified from rabbit antiserum by affinity-chromatography using epitope-specific immunogen.
<b>Dilution</b>	WB 1:500-2000 ELISA 1:5000-20000
<b>Concentration</b>	1 mg/ml
<b>Purity</b>	≥90%
<b>Storage Stability</b>	-20°C/1 year
<b>Synonyms</b>	
<b>Observed Band</b>	24kD
<b>Cell Pathway</b>	Cytoplasmic vesicle, secretory vesicle membrane ; Single-pass type IV membrane protein . Golgi apparatus, trans-Golgi network membrane ; Single-pass type IV membrane protein . Late endosome membrane ; Single-pass type IV membrane protein . Lysosome membrane ; Single-pass type IV membrane protein . Endoplasmic reticulum membrane ; Single-pass type IV membrane protein . Cytoplasmic vesicle, phagosome membrane ; Single-pass type IV membrane protein . Cell junction, synapse, synaptosome . In immature neurons expression is localized in vesicular structures in axons and dendrites while in mature neurons it is localized to the somatodendritic region. Colocalizes with LAMP1 in kidney cells. Localization to the endoplasmic reticulum membrane was observed in the intestine but not in liver or kidney
<b>Tissue Specificity</b>	Detected in all tissues tested.
<b>Function</b>	function:Involved in the targeting and/or fusion of transport vesicles to their target membrane during transport of proteins from the early endosome to the lysosome. Required for heterotypic fusion of late endosomes with lysosomes and homotypic lysosomal fusion. Required for calcium regulated lysosomal exocytosis. Involved in the export of chylomicrons from the endoplasmic reticulum to the cis Golgi. Required for exocytosis of mediators during eosinophil and neutrophil



degranulation, and target cell killing by natural killer cells. Required for focal exocytosis of late endocytic vesicles during phagosome formation.,miscellaneous:Loss-of-function mutant (antisense inhibition) displays impaired granzyme B release and target cell killing by natural killer cells.,miscellaneous:The gene encoding for this protein is located in the pseudoautosomal region 2 (PAR2) of X and Y chromosomes.,similar

#### Background

This gene encodes a transmembrane protein that is a member of the soluble N-ethylmaleimide-sensitive factor attachment protein receptor (SNARE) family. The encoded protein localizes to late endosomes and lysosomes and is involved in the fusion of transport vesicles to their target membranes. Alternate splicing results in multiple transcript variants.[provided by RefSeq, Jun 2010],

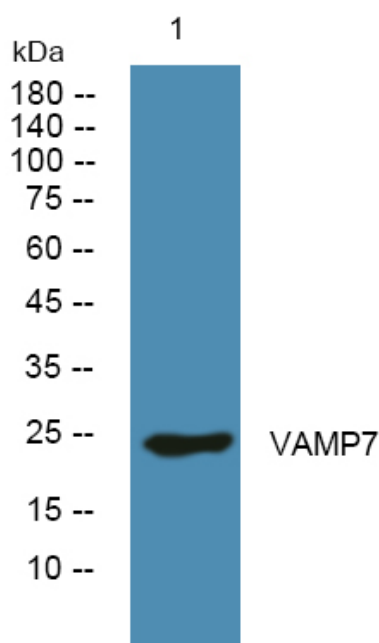
#### matters needing attention

Avoid repeated freezing and thawing!

#### Usage suggestions

This product can be used in immunological reaction related experiments. For more information, please consult technical personnel.

### Products Images



Western blot analysis of lysates from U2OS cells, primary antibody was diluted at 1:1000, 4° over night