



HLAE Polyclonal Antibody

Catalog No	YP-Ab-07806
Isotype	IgG
Reactivity	Human
Applications	WB;ELISA
Gene Name	HLA-E HLA-6.2 HLAE
Protein Name	HLA class I histocompatibility antigen, alpha chain E (MHC class I antigen E)
Immunogen	Synthesized peptide derived from part region of human protein
Specificity	HLAE Polyclonal Antibody detects endogenous levels of protein.
Formulation	Liquid in PBS containing 50% glycerol, and 0.02% sodium azide.
Source	Polyclonal, Rabbit,IgG
Purification	The antibody was affinity-purified from rabbit antiserum by affinity-chromatography using epitope-specific immunogen.
Dilution	WB 1:500-2000 ELISA 1:5000-20000
Concentration	1 mg/ml
Purity	≥90%
Storage Stability	-20°C/1 year
Synonyms	
Observed Band	39kD
Cell Pathway	Cell membrane ; Single-pass type I membrane protein. Golgi apparatus membrane .; [Soluble HLA class I histocompatibility antigen, alpha chain E]: Secreted .
Tissue Specificity	Expressed in secretory endometrial cells during pregnancy (at protein level). The expression in nonlymphoid tissues is restricted to endothelial cells from all types of vessels, including arteries, veins, capillaries, and lymphatics (at protein level). In lymphoid organs, it is mainly expressed in endothelial venules, B and T cells, monocytes, macrophages, NK cells and megakaryocytes (at protein level).
Function	caution:The existence of allele E*0102 (PubMed:3260916) and allele E*0104 (PubMed:1977695) is uncertain. The alleles could not be confirmed in further studies (PubMed:12445303).,function:Preferably binds to a peptide derived from the signal sequence of most HLA-A, -B, -C and -G molecules.,polymorphism:The following alleles of E-1 are known: E*0101, E*0102, E*0103 and E*0104. The sequence shown is that of E*0101.,similarity:Belongs to the MHC class I family.,similarity:Contains 1 Ig-like C1-type (immunoglobulin-like) domain.,subunit:Heterodimer of an alpha chain and a beta chain (beta-2-microglobulin).,
Background	HLA-E belongs to the HLA class I heavy chain paralogues. This class I molecule is a heterodimer consisting of a heavy chain and a light chain (beta-2



microglobulin). The heavy chain is anchored in the membrane. HLA-E binds a restricted subset of peptides derived from the leader peptides of other class I molecules. The heavy chain is approximately 45 kDa and its gene contains 8 exons. Exon one encodes the leader peptide, exons 2 and 3 encode the alpha1 and alpha2 domains, which both bind the peptide, exon 4 encodes the alpha3 domain, exon 5 encodes the transmembrane region, and exons 6 and 7 encode the cytoplasmic tail. [provided by RefSeq, Jul 2008],

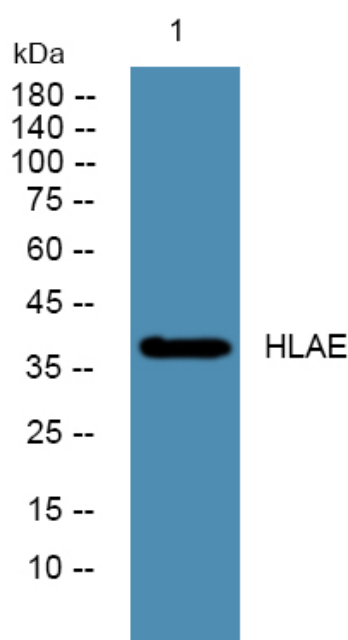
matters needing attention

Avoid repeated freezing and thawing!

Usage suggestions

This product can be used in immunological reaction related experiments. For more information, please consult technical personnel.

Products Images



Western blot analysis of lysates from DU145 cells, primary antibody was diluted at 1:1000, 4° over night