



NUCG Polyclonal Antibody

Catalog No	YP-Ab-07798
Isotype	IgG
Reactivity	Human;Mouse
Applications	WB;ELISA
Gene Name	ENDOG
Protein Name	Endonuclease G, mitochondrial (Endo G) (EC 3.1.30.-)
Immunogen	Synthesized peptide derived from part region of human protein
Specificity	NUCG Polyclonal Antibody detects endogenous levels of protein.
Formulation	Liquid in PBS containing 50% glycerol, and 0.02% sodium azide.
Source	Polyclonal, Rabbit,IgG
Purification	The antibody was affinity-purified from rabbit antiserum by affinity-chromatography using epitope-specific immunogen.
Dilution	WB 1:500-2000 ELISA 1:5000-20000
Concentration	1 mg/ml
Purity	≥90%
Storage Stability	-20°C/1 year
Synonyms	
Observed Band	32kD
Cell Pathway	Mitochondrion .
Tissue Specificity	Brain,Uterus,
Function	cofactor:Manganese or magnesium.,function:Cleaves DNA at double-stranded (DG)n.(DC)n and at single-stranded (DC)n tracts. In addition to deoxyribonuclease activities, also has ribonuclease (RNase) and RNase H activities. Capable of generating the RNA primers required by DNA polymerase gamma to initiate replication of mitochondrial DNA.,miscellaneous:The active site contains 1 hydrated divalent metal cation that has only 1 direct interaction with the protein; all other interactions are via water molecules.,similarity:Belongs to the DNA/RNA non-specific endonuclease family.,subunit:Homodimer.,
Background	The protein encoded by this gene is a nuclear encoded endonuclease that is localized in the mitochondrion. The encoded protein is widely distributed among animals and cleaves DNA at GC tracts. This protein is capable of generating the RNA primers required by DNA polymerase gamma to initiate replication of mitochondrial DNA. [provided by RefSeq, Jul 2008],

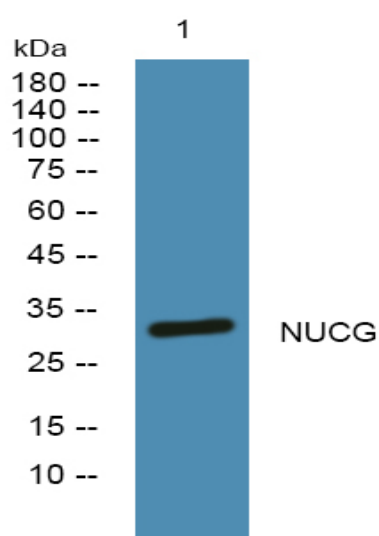
matters needing attention

Avoid repeated freezing and thawing!

Usage suggestions

This product can be used in immunological reaction related experiments. For more information, please consult technical personnel.

Products Images



Western blot analysis of lysates from Jarkat cells, primary antibody was diluted at 1:1000, 4° over night