



MARE3 Polyclonal Antibody

Catalog No	YP-Ab-07796
Isotype	IgG
Reactivity	Human;Mouse;Rat
Applications	WB;ELISA
Gene Name	MAPRE3
Protein Name	Microtubule-associated protein RP/EB family member 3 (EB1 protein family member 3) (EBF3) (End-binding protein 3) (EB3) (RP3)
Immunogen	Synthesized peptide derived from part region of human protein
Specificity	MARE3 Polyclonal Antibody detects endogenous levels of protein.
Formulation	Liquid in PBS containing 50% glycerol, and 0.02% sodium azide.
Source	Polyclonal, Rabbit,IgG
Purification	The antibody was affinity-purified from rabbit antiserum by affinity-chromatography using epitope-specific immunogen.
Dilution	WB 1:500-2000 ELISA 1:5000-20000
Concentration	1 mg/ml
Purity	≥90%
Storage Stability	-20°C/1 year
Synonyms	
Observed Band	30kD
Cell Pathway	Cytoplasm, cytoskeleton . Associated with the microtubule network. Detected at the plus end of microtubules. .
Tissue Specificity	Predominantly expressed in brain and muscle.
Function	domain:Composed of two functionally independent domains. The N-terminal domain forms an hydrophobic cleft involved in microtubule binding and the C-terminal is involved in the formation of mutually exclusive complexes with APC and DCTN1.,function:May be involved in microtubule polymerization, and spindle function by stabilizing microtubules and anchoring them at centrosomes. May play a role in cell migration.,similarity:Belongs to the MAPRE family.,similarity:Contains 1 CH (calponin-homology) domain.,similarity:Contains 1 EB1 C-terminal domain.,subcellular location:Associated with the microtubule network.,subunit:Interacts with APC2 (By similarity). Interacts with DCTN1. Binds to the C-terminal domain of APC. Binds monomeric and polymerized tubulin.,tissue specificity:Predominantly expressed in brain and muscle.,
Background	The protein encoded by this gene is a member of the RP/EB family of genes. The protein localizes to the cytoplasmic microtubule network and binds APCL, a homolog of the adenomatous polyposis coli tumor suppressor gene. [provided by RefSeq, Jul 2008],

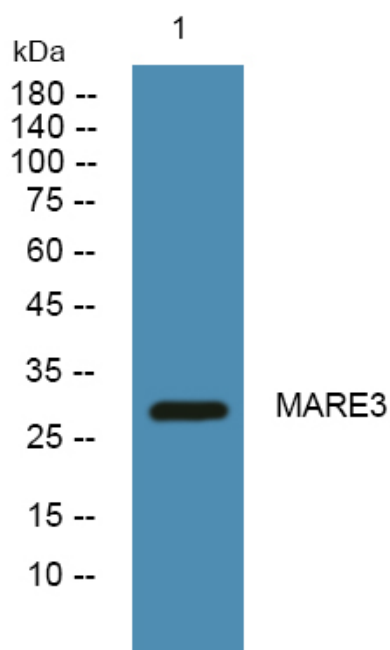
matters needing attention

Avoid repeated freezing and thawing!

Usage suggestions

This product can be used in immunological reaction related experiments. For more information, please consult technical personnel.

Products Images



Western blot analysis of lysates from HCT116 cells, primary antibody was diluted at 1:1000, 4° over night