

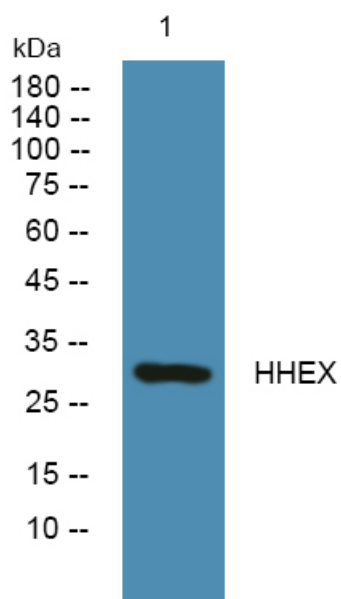


HHEX Polyclonal Antibody

Catalog No	YP-Ab-07784
Isotype	IgG
Reactivity	Human;Mouse
Applications	WB;ELISA
Gene Name	HHEX HEX PRH PRHX
Protein Name	Hematopoietically-expressed homeobox protein HHEX (Homeobox protein HEX) (Homeobox protein PRH)
Immunogen	Synthesized peptide derived from part region of human protein
Specificity	HHEX Polyclonal Antibody detects endogenous levels of protein.
Formulation	Liquid in PBS containing 50% glycerol, and 0.02% sodium azide.
Source	Polyclonal, Rabbit,IgG
Purification	The antibody was affinity-purified from rabbit antiserum by affinity-chromatography using epitope-specific immunogen.
Dilution	WB 1:500-2000 ELISA 1:5000-20000
Concentration	1 mg/ml
Purity	≥90%
Storage Stability	-20°C/1 year
Synonyms	
Observed Band	29kD
Cell Pathway	Nucleus .
Tissue Specificity	Liver and promyelocytic leukemia cell line HL-60.
Function	developmental stage:Expressed during hematopoiesis.,function:Recognizes the DNA sequence 5'-ATTAA-3'. Transcriptional repressor. May play a role in hematopoietic differentiation. Establishes anterior identity at two levels; acts early to enhance canonical WNT-signaling by repressing expression of TLE4, and acts later to inhibit NODAL-signaling by directly targeting NODAL.,similarity:Contains 1 homeobox DNA-binding domain.,tissue specificity:Liver and promyelocytic leukemia cell line HL60.,
Background	This gene encodes a member of the homeobox family of transcription factors, many of which are involved in developmental processes. Expression in specific hematopoietic lineages suggests that this protein may play a role in hematopoietic differentiation. [provided by RefSeq, Jul 2008],
matters needing attention	Avoid repeated freezing and thawing!

Usage suggestions

This product can be used in immunological reaction related experiments. For more information, please consult technical personnel.

Products Images

Western blot analysis of lysates from A431 cells,
primary antibody was diluted at 1:1000, 4° over night