



# OCLN Polyclonal Antibody

<b>Catalog No</b>	YP-Ab-07715
<b>Isotype</b>	IgG
<b>Reactivity</b>	Human;Mouse;Rat
<b>Applications</b>	WB IF;ELISA
<b>Gene Name</b>	OCLN
<b>Protein Name</b>	Occludin;OCN
<b>Immunogen</b>	Synthesized peptide derived from part region of human protein. AA350-400
<b>Specificity</b>	OCLN Polyclonal Antibody detects endogenous levels of protein.
<b>Formulation</b>	Liquid in PBS containing 50% glycerol, and 0.02% sodium azide.
<b>Source</b>	Polyclonal, Rabbit,IgG
<b>Purification</b>	The antibody was affinity-purified from rabbit antiserum by affinity-chromatography using epitope-specific immunogen.
<b>Dilution</b>	WB 1:500-2000 IF 1:100-300 ELISA 1:5000-20000 Not yet tested in other applications.
<b>Concentration</b>	1 mg/ml
<b>Purity</b>	≥90%
<b>Storage Stability</b>	-20°C/1 year
<b>Synonyms</b>	
<b>Observed Band</b>	57kD
<b>Cell Pathway</b>	Cell membrane ; Multi-pass membrane protein . Cell junction, tight junction .
<b>Tissue Specificity</b>	Localized at tight junctions of both epithelial and endothelial cells. Highly expressed in kidney. Not detected in testis.
<b>Function</b>	protein complex assembly, cellular amino acid derivative metabolic process, sulfur metabolic process, nucleoside metabolic process, ribonucleoside metabolic process, purine nucleoside metabolic process, macromolecular complex subunit organization, purine ribonucleoside metabolic process, S-adenosylhomocysteine metabolic process, S-adenosylmethionine metabolic process, macromolecular complex assembly, protein complex biogenesis,
<b>Background</b>	This gene encodes an integral membrane protein that is required for cytokine-induced regulation of the tight junction paracellular permeability barrier. Mutations in this gene are thought to be a cause of band-like calcification with simplified gyration and polymicrogyria (BLC-PMG), an autosomal recessive neurologic disorder that is also known as pseudo-TORCH syndrome. Alternative splicing results in multiple transcript variants. A related pseudogene is present 1.5 Mb downstream on the q arm of chromosome 5. [provided by RefSeq, Apr 2011],

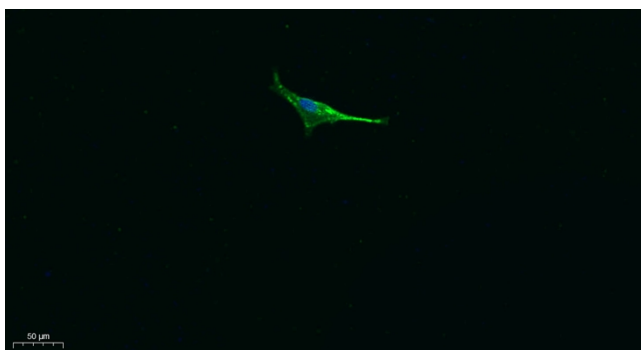
**matters needing attention**

Avoid repeated freezing and thawing!

**Usage suggestions**

This product can be used in immunological reaction related experiments. For more information, please consult technical personnel.

## Products Images



Immunofluorescence analysis of A549. 1, primary Antibody was diluted at 1:200(4°C overnight). 2, Goat Anti Rabbit IgG (H&L) - Alexa Fluor 488 Secondary antibody was diluted at 1:1000(room temperature, 50min).3, Picture B: DAPI(blue) 10min.