



HMOX2 Polyclonal Antibody

Catalog No	YP-Ab-07707
Isotype	IgG
Reactivity	Human;Mouse;Rat
Applications	WB;ELISA
Gene Name	HMOX2 HO2
Protein Name	Heme oxygenase 2 (HO-2) (EC 1.14.99.3)
Immunogen	Synthesized peptide derived from part region of human protein
Specificity	HMOX2 Polyclonal Antibody detects endogenous levels of protein.
Formulation	Liquid in PBS containing 50% glycerol, and 0.02% sodium azide.
Source	Polyclonal, Rabbit,IgG
Purification	The antibody was affinity-purified from rabbit antiserum by affinity-chromatography using epitope-specific immunogen.
Dilution	WB 1:500-2000 ELISA 1:5000-20000
Concentration	1 mg/ml
Purity	≥90%
Storage Stability	-20°C/1 year
Synonyms	
Observed Band	34kD
Cell Pathway	Microsome membrane ; Single-pass type IV membrane protein ; Cytoplasmic side . Endoplasmic reticulum membrane ; Single-pass type IV membrane protein ; Cytoplasmic side .
Tissue Specificity	Cerebellum,Intestine,Kidney,Lung,Placenta,
Function	catalytic activity:Heme + 3 AH(2) + 3 O(2) = biliverdin + Fe(2+) + CO + 3 A + 3 H(2)O.,function:Heme oxygenase cleaves the heme ring at the alpha methene bridge to form biliverdin. Biliverdin is subsequently converted to bilirubin by biliverdin reductase. Under physiological conditions, the activity of heme oxygenase is highest in the spleen, where senescent erythrocytes are sequestered and destroyed. Heme oxygenase 2 could be implicated in the production of carbon monoxide in brain where it could act as a neurotransmitter.,induction:Heme oxygenase 2 activity is non-inducible.,similarity:Belongs to the heme oxygenase family.,similarity:Contains 2 HRM (heme regulatory motif) repeats.,
Background	heme oxygenase 2(HMOX2) Homo sapiens Heme oxygenase, an essential enzyme in heme catabolism, cleaves heme to form biliverdin, which is subsequently converted to bilirubin by biliverdin reductase, and carbon monoxide, a putative neurotransmitter. Heme oxygenase activity is induced by its substrate



heme and by various nonheme substances. Heme oxygenase occurs as 2 isozymes, an inducible heme oxygenase-1 and a constitutive heme oxygenase-2. HMOX1 and HMOX2 belong to the heme oxygenase family. Several alternatively spliced transcript variants encoding three different isoforms have been found for this gene. [provided by RefSeq, Oct 2013],

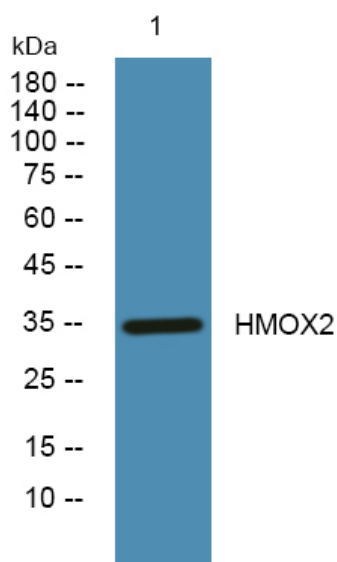
matters needing attention

Avoid repeated freezing and thawing!

Usage suggestions

This product can be used in immunological reaction related experiments. For more information, please consult technical personnel.

Products Images



Western blot analysis of lysates from A431 cells, primary antibody was diluted at 1:1000, 4° over night