

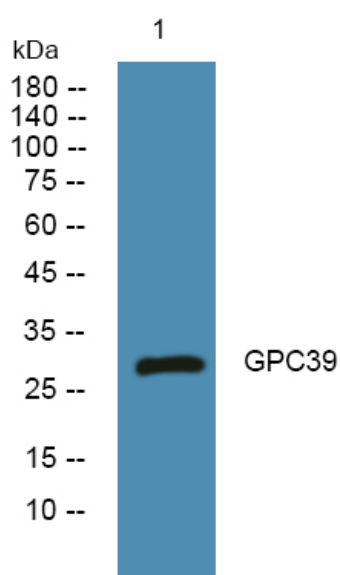


# GPC39 Polyclonal Antibody

|                                  |   |
|----------------------------------|---|
| <b>Catalog No</b>                | YP-Ab-07642   |
| <b>Isotype</b>                   | IgG   |
| <b>Reactivity</b>                | Human;Rat;Mouse;  |
| <b>Applications</b>              | WB;ELISA  |
| <b>Gene Name</b>                 |   |
| <b>Protein Name</b>              | Putative G-protein coupled receptor GPCR39 (hGPCR39)  |
| <b>Immunogen</b>                 | Synthesized peptide derived from human protein . at AA range: 120-200   |
| <b>Specificity</b>               | GPC39 Polyclonal Antibody detects endogenous levels of protein.   |
| <b>Formulation</b>               | Liquid in PBS containing 50% glycerol, and 0.02% sodium azide.  |
| <b>Source</b>                    | Polyclonal, Rabbit,IgG  |
| <b>Purification</b>              | The antibody was affinity-purified from rabbit antiserum by affinity-chromatography using epitope-specific immunogen.                                   |
| <b>Dilution</b>                  | WB 1:500-2000 ELISA 1:5000-20000  |
| <b>Concentration</b>             | 1 mg/ml   |
| <b>Purity</b>                    | ≥90%  |
| <b>Storage Stability</b>         | -20°C/1 year  |
| <b>Synonyms</b>                  |   |
| <b>Observed Band</b>             | 29kD  |
| <b>Cell Pathway</b>              | Cell membrane; Multi-pass membrane protein.   |
| <b>Tissue Specificity</b>        |   |
| <b>Function</b>                  |   |
| <b>Background</b>                | GPR32P1 (G Protein-Coupled Receptor 32, Pseudogene 1) is a Pseudogene. GO annotations related to this gene include G-protein coupled receptor activity. |
| <b>matters needing attention</b> | Avoid repeated freezing and thawing!  |
| <b>Usage suggestions</b>         | This product can be used in immunological reaction related experiments. For more information, please consult technical personnel.                       |



## Products Images



Western blot analysis of lysates from PC12 cells,  
primary antibody was diluted at 1:1000, 4° over night