



# TAAR8 Polyclonal Antibody

<b>Catalog No</b>	YP-Ab-07640
<b>Isotype</b>	IgG
<b>Reactivity</b>	Human;Rat;Mouse;
<b>Applications</b>	WB;ELISA
<b>Gene Name</b>	TAAR8 GPR102 TA5 TAR5 TRAR5
<b>Protein Name</b>	Trace amine-associated receptor 8 (TaR-8) (Trace amine receptor 8) (G-protein coupled receptor 102) (Trace amine receptor 5) (TaR-5)
<b>Immunogen</b>	Synthesized peptide derived from human protein . at AA range: 110-190
<b>Specificity</b>	TAAR8 Polyclonal Antibody detects endogenous levels of protein.
<b>Formulation</b>	Liquid in PBS containing 50% glycerol, and 0.02% sodium azide.
<b>Source</b>	Polyclonal, Rabbit,IgG
<b>Purification</b>	The antibody was affinity-purified from rabbit antiserum by affinity-chromatography using epitope-specific immunogen.
<b>Dilution</b>	WB 1:500-2000 ELISA 1:5000-20000
<b>Concentration</b>	1 mg/ml
<b>Purity</b>	≥90%
<b>Storage Stability</b>	-20°C/1 year
<b>Synonyms</b>	
<b>Observed Band</b>	37kD
<b>Cell Pathway</b>	Cell membrane; Multi-pass membrane protein.
<b>Tissue Specificity</b>	Expressed in kidney and amygdala. Not expressed in other tissues or brain regions tested.
<b>Function</b>	function:Orphan receptor. Could be a receptor for trace amines. Trace amines are biogenic amines present in very low levels in mammalian tissues. Although some trace amines have clearly defined roles as neurotransmitters in invertebrates, the extent to which they function as true neurotransmitters in vertebrates has remained speculative. Trace amines are likely to be involved in a variety of physiological functions that have yet to be fully understood.,similarity:Belongs to the G-protein coupled receptor 1 family.,tissue specificity:Expressed in kidney and amygdala. Not expressed in other tissues or brain regions tested.,
<b>Background</b>	This gene is part of the trace amine receptor cluster on chromosome 6 and encodes an orphan G-protein coupled receptor. Upregulated expression of this gene in astroglial cells upon exposure to lipopolysaccharides suggests a function for the encoded protein in the brain. [provided by RefSeq, Jul 2016],

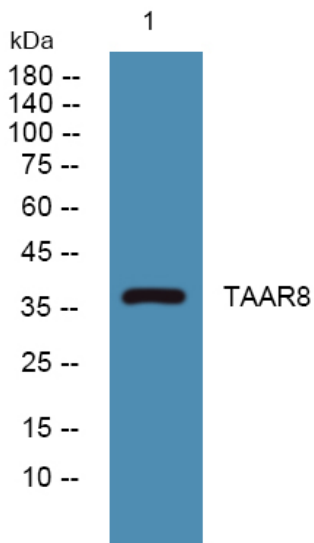
**matters needing attention**

Avoid repeated freezing and thawing!

**Usage suggestions**

This product can be used in immunological reaction related experiments. For more information, please consult technical personnel.

## Products Images



Western blot analysis of lysates from K562 cells, primary antibody was diluted at 1:1000, 4° over night