

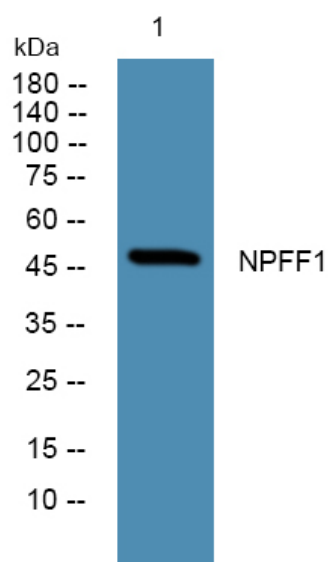


NPFF1 Polyclonal Antibody

Catalog No	YP-Ab-07566
Isotype	IgG
Reactivity	Human;Rat
Applications	WB;ELISA
Gene Name	NPFFR1 GPR147 NPFF1
Protein Name	Neuropeptide FF receptor 1 (G-protein coupled receptor 147) (RFamide-related peptide receptor OT7T022)
Immunogen	Synthesized peptide derived from human protein . at AA range: 300-380
Specificity	NPFF1 Polyclonal Antibody detects endogenous levels of protein.
Formulation	Liquid in PBS containing 50% glycerol, and 0.02% sodium azide.
Source	Polyclonal, Rabbit,IgG
Purification	The antibody was affinity-purified from rabbit antiserum by affinity-chromatography using epitope-specific immunogen.
Dilution	WB 1:500-2000 ELISA 1:5000-20000
Concentration	1 mg/ml
Purity	≥90%
Storage Stability	-20°C/1 year
Synonyms	
Observed Band	47kD
Cell Pathway	Cell membrane; Multi-pass membrane protein.
Tissue Specificity	Spinal cord,
Function	function:Receptor for NPAF (A-18-F-amide) and NPFF (F-8-F-amide) neuropeptides, also known as morphine-modulating peptides. Can also be activated by a variety of naturally occurring or synthetic FMRF-amide like ligands. This receptor mediates its action by association with G proteins that activate a phosphatidylinositol-calcium second messenger system.,similarity:Belongs to the G-protein coupled receptor 1 family.,
Background	function:Receptor for NPAF (A-18-F-amide) and NPFF (F-8-F-amide) neuropeptides, also known as morphine-modulating peptides. Can also be activated by a variety of naturally occurring or synthetic FMRF-amide like ligands. This receptor mediates its action by association with G proteins that activate a phosphatidylinositol-calcium second messenger system.,similarity:Belongs to the G-protein coupled receptor 1 family.,
matters needing attention	Avoid repeated freezing and thawing!

Usage suggestions

This product can be used in immunological reaction related experiments. For more information, please consult technical personnel.

Products Images

Western blot analysis of lysates from K562 cells,
primary antibody was diluted at 1:1000, 4° over night