

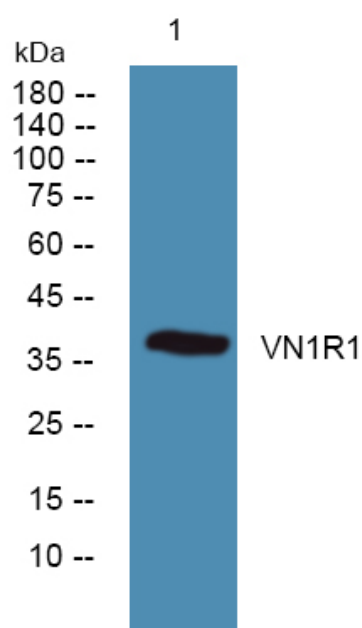


VN1R1 Polyclonal Antibody

Catalog No	YP-Ab-07559
Isotype	IgG
Reactivity	Human;Rat;Mouse;
Applications	WB;ELISA
Gene Name	VN1R1 V1RL1 VNR19I1
Protein Name	Vomeroneasal type-1 receptor 1 (G-protein coupled receptor GPCR24) (hGPCR24) (V1r-like receptor 1) (V3r-related gene protein) (Vomeroneasal olfactory receptor chromosome 19 subtype I member 1)
Immunogen	Synthesized peptide derived from human protein . at AA range: 150-230
Specificity	VN1R1 Polyclonal Antibody detects endogenous levels of protein.
Formulation	Liquid in PBS containing 50% glycerol, and 0.02% sodium azide.
Source	Polyclonal, Rabbit,IgG
Purification	The antibody was affinity-purified from rabbit antiserum by affinity-chromatography using epitope-specific immunogen.
Dilution	WB 1:500-2000 ELISA 1:5000-20000
Concentration	1 mg/ml
Purity	≥90%
Storage Stability	-20°C/1 year
Synonyms	
Observed Band	38kD
Cell Pathway	Cell membrane; Multi-pass membrane protein.
Tissue Specificity	Expressed in the olfactory mucosa, very low expression in brain, lung and kidney.
Function	function:Putative pheromone receptor.,miscellaneous:The chimpanzee and orangutan orthologous proteins do not exist, their genes are pseudogenes.,online information:No one nose - Issue 61 of August 2005,similarity:Belongs to the G-protein coupled receptor 1 family.,tissue specificity:Expressed in the olfactory mucosa, very low expression in brain, lung and kidney.,
Background	vomeroneasal 1 receptor 1(VN1R1) Homo sapiens Pheromones are chemical signals that elicit specific behavioral responses and physiologic alterations in recipients of the same species. The protein encoded by this gene is similar to pheromone receptors and is primarily localized to the olfactory mucosa. An alternate splice variant of this gene is thought to exist, but its full length nature has not been determined. [provided by RefSeq, Jul 2008],
matters needing attention	Avoid repeated freezing and thawing!

**Usage suggestions**

This product can be used in immunological reaction related experiments. For more information, please consult technical personnel.

Products Images

Western blot analysis of lysates from KB cells, primary antibody was diluted at 1:1000, 4° over night