

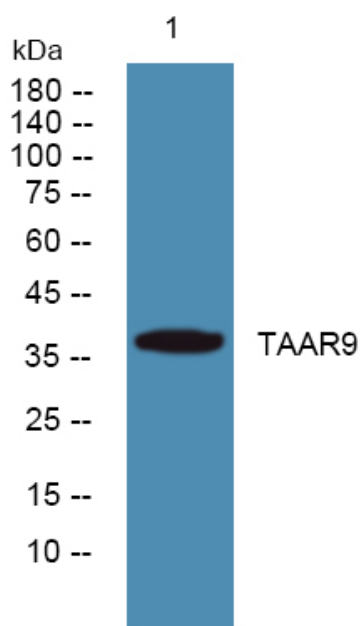


# TAAR9 Polyclonal Antibody

<b>Catalog No</b>	YP-Ab-07552
<b>Isotype</b>	IgG
<b>Reactivity</b>	Human;Rat;Mouse
<b>Applications</b>	WB;ELISA
<b>Gene Name</b>	TAAR9 TA3 TAR3 TRAR3
<b>Protein Name</b>	Trace amine-associated receptor 9 (TaR-9) (Trace amine receptor 9) (Trace amine receptor 3) (TaR-3)
<b>Immunogen</b>	Synthesized peptide derived from human protein . at AA range: 110-190
<b>Specificity</b>	TAAR9 Polyclonal Antibody detects endogenous levels of protein.
<b>Formulation</b>	Liquid in PBS containing 50% glycerol, and 0.02% sodium azide.
<b>Source</b>	Polyclonal, Rabbit,IgG
<b>Purification</b>	The antibody was affinity-purified from rabbit antiserum by affinity-chromatography using epitope-specific immunogen.
<b>Dilution</b>	WB 1:500-2000 ELISA 1:5000-20000
<b>Concentration</b>	1 mg/ml
<b>Purity</b>	≥90%
<b>Storage Stability</b>	-20°C/1 year
<b>Synonyms</b>	
<b>Observed Band</b>	38kD
<b>Cell Pathway</b>	Cell membrane; Multi-pass membrane protein.
<b>Tissue Specificity</b>	
<b>Function</b>	function:Orphan receptor. Could be a receptor for trace amines. Trace amines are biogenic amines present in very low levels in mammalian tissues. Although some trace amines have clearly defined roles as neurotransmitters in invertebrates, the extent to which they function as true neurotransmitters in vertebrates has remained speculative. Trace amines are likely to be involved in a variety of physiological functions that have yet to be fully understood.,similarity:Belongs to the G-protein coupled receptor 1 family.,
<b>Background</b>	TAAR9 is a member of a large family of rhodopsin G protein-coupled receptors (GPCRs, or GPRs). GPCRs contain 7 transmembrane domains and transduce extracellular signals through heterotrimeric G proteins.[supplied by OMIM, Jul 2005],
<b>matters needing attention</b>	Avoid repeated freezing and thawing!

**Usage suggestions**

This product can be used in immunological reaction related experiments. For more information, please consult technical personnel.

**Products Images**

Western blot analysis of lysates from KB cells, primary antibody was diluted at 1:1000, 4° over night