

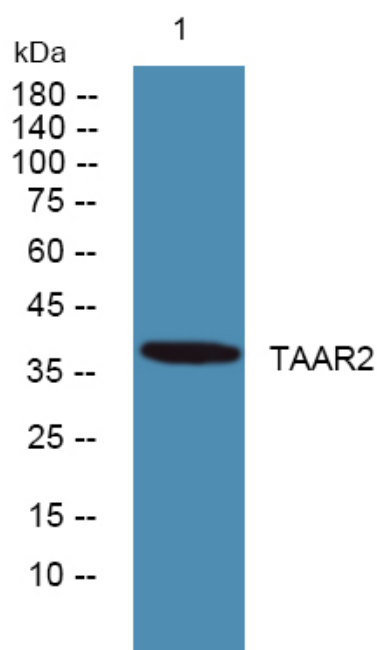


TAAR2 Polyclonal Antibody

Catalog No	YP-Ab-07550
Isotype	IgG
Reactivity	Human;Rat;Mouse
Applications	WB;ELISA
Gene Name	TAAR2 GPR58
Protein Name	Trace amine-associated receptor 2 (TaR-2) (Trace amine receptor 2) (G-protein coupled receptor 58)
Immunogen	Synthesized peptide derived from human protein . at AA range: 10-90
Specificity	TAAR2 Polyclonal Antibody detects endogenous levels of protein.
Formulation	Liquid in PBS containing 50% glycerol, and 0.02% sodium azide.
Source	Polyclonal, Rabbit,IgG
Purification	The antibody was affinity-purified from rabbit antiserum by affinity-chromatography using epitope-specific immunogen.
Dilution	WB 1:500-2000 ELISA 1:5000-20000
Concentration	1 mg/ml
Purity	≥90%
Storage Stability	-20°C/1 year
Synonyms	
Observed Band	38kD
Cell Pathway	Cell membrane; Multi-pass membrane protein.
Tissue Specificity	Not expressed in the pons, thalamus, hypothalamus, hippocampus, caudate, putamen, frontal cortex, basal forebrain, midbrain or liver.
Function	function:Orphan receptor.,similarity:Belongs to the G-protein coupled receptor 1 family.,tissue specificity:Not expressed in the pons, thalamus, hypothalamus, hippocampus, caudate, putamen, frontal cortex, basal forebrain, midbrain or liver.,
Background	function:Orphan receptor.,similarity:Belongs to the G-protein coupled receptor 1 family.,tissue specificity:Not expressed in the pons, thalamus, hypothalamus, hippocampus, caudate, putamen, frontal cortex, basal forebrain, midbrain or liver.,
matters needing attention	Avoid repeated freezing and thawing!
Usage suggestions	This product can be used in immunological reaction related experiments. For more information, please consult technical personnel.



Products Images



Western blot analysis of lysates from PC12 cells,
primary antibody was diluted at 1:1000, 4°over night