



LT4R1 Polyclonal Antibody

Catalog No	YP-Ab-07414
Isotype	IgG
Reactivity	Human;Mouse;Rat
Applications	WB;ELISA
Gene Name	LTB4R BLT BLT1 BLTR CMKRL1 GPR16 P2RY7
Protein Name	Leukotriene B4 receptor 1 (LTB4-R 1) (LTB4-R1) (Chemoattractant receptor-like 1) (G-protein coupled receptor 16) (P2Y purinoceptor 7) (P2Y7)
Immunogen	Synthesized peptide derived from part region of human protein
Specificity	LT4R1 Polyclonal Antibody detects endogenous levels of protein.
Formulation	Liquid in PBS containing 50% glycerol, and 0.02% sodium azide.
Source	Polyclonal, Rabbit,IgG
Purification	The antibody was affinity-purified from rabbit antiserum by affinity-chromatography using epitope-specific immunogen.
Dilution	WB 1:500-2000 ELISA 1:5000-20000
Concentration	1 mg/ml
Purity	≥90%
Storage Stability	-20°C/1 year
Synonyms	
Observed Band	38kD
Cell Pathway	Cell membrane; Multi-pass membrane protein.
Tissue Specificity	Expressed at highest levels in heart, skeletal muscle and at lower levels in brain and liver. High level of expression in lymphoid tissues.
Function	function:Receptor for extracellular ATP > UTP and ADP. The activity of this receptor is mediated by G proteins which activate a phosphatidylinositol-calcium second messenger system. May be the cardiac P2Y receptor involved in the regulation of cardiac muscle contraction through modulation of L-type calcium currents. Is a receptor for leukotriene B4, a potent chemoattractant involved in inflammation and immune response.,PTM:Phosphorylated by GRK6 upon leukotriene B4 binding; which promotes desensitization.,similarity:Belongs to the G-protein coupled receptor 1 family.,tissue specificity:Expressed at highest levels in heart, skeletal muscle and at lower levels in brain and liver. High level of expression in lymphoid tissues.,
Background	function:Receptor for extracellular ATP > UTP and ADP. The activity of this receptor is mediated by G proteins which activate a phosphatidylinositol-calcium second messenger system. May be the cardiac P2Y receptor involved in the regulation of cardiac muscle contraction through modulation of L-type calcium currents. Is a receptor for leukotriene B4, a potent chemoattractant involved in



inflammation and immune response.,PTM:Phosphorylated by GRK6 upon leukotriene B4 binding; which promotes desensitization.,similarity:Belongs to the G-protein coupled receptor 1 family.,tissue specificity:Expressed at highest levels in heart, skeletal muscle and at lower levels in brain and liver. High level of expression in lymphoid tissues.,

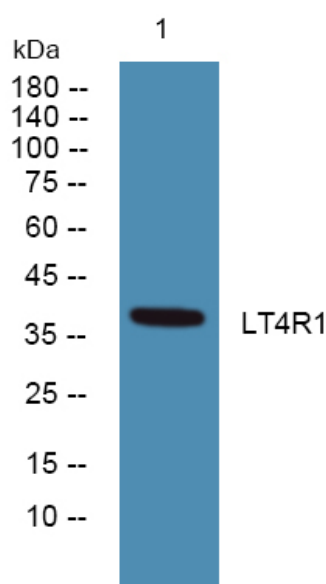
matters needing attention

Avoid repeated freezing and thawing!

Usage suggestions

This product can be used in immunological reaction related experiments. For more information, please consult technical personnel.

Products Images



Western blot analysis of lysates from SH-SY5Y cells, primary antibody was diluted at 1:1000, 4° over night