



CCR9 Polyclonal Antibody

Catalog No	YP-Ab-07367
Isotype	IgG
Reactivity	Human;Mouse
Applications	WB;ELISA
Gene Name	CCR9 GPR28
Protein Name	C-C chemokine receptor type 9 (C-C CKR-9) (CC-CKR-9) (CCR-9) (G-protein coupled receptor 28) (GPR-9-6) (CD antigen CDw199)
Immunogen	Synthesized peptide derived from human protein . at AA range: 140-220
Specificity	CCR9 Polyclonal Antibody detects endogenous levels of protein.
Formulation	Liquid in PBS containing 50% glycerol, and 0.02% sodium azide.
Source	Polyclonal, Rabbit,IgG
Purification	The antibody was affinity-purified from rabbit antiserum by affinity-chromatography using epitope-specific immunogen.
Dilution	WB 1:500-2000 ELISA 1:5000-20000
Concentration	1 mg/ml
Purity	≥90%
Storage Stability	-20°C/1 year
Synonyms	
Observed Band	40kD
Cell Pathway	Cell membrane ; Multi-pass membrane protein .
Tissue Specificity	Highly expressed in the thymus and low in lymph nodes and spleen.
Function	function:Receptor for chemokine SCYA25/TECK. Subsequently transduces a signal by increasing the intracellular calcium ions level. Alternative coreceptor with CD4 for HIV-1 infection.,miscellaneous:EC50 of SCYA25/TECK for isoform 1 is lower than for isoform 2.,online information:CC chemokine receptors entry,similarity:Belongs to the G-protein coupled receptor 1 family.,tissue specificity:Highly expressed in the thymus and low in lymph nodes and spleen.,
Background	The protein encoded by this gene is a member of the beta chemokine receptor family. It is predicted to be a seven transmembrane protein similar to G protein-coupled receptors. Chemokines and their receptors are key regulators of the thymocytes migration and maturation in normal and inflammation conditions. The specific ligand of this receptor is CCL25. It has been found that this gene is differentially expressed by T lymphocytes of small intestine and colon, suggested a role in the thymocytes recruitment and development that may permit functional specialization of immune responses in different segment of the gastrointestinal tract. This gene is mapped to the chemokine receptor gene cluster region. Two

alternatively spliced transcript variants have been described. Multiple transcript variants encoding different isoforms have been found for this gene. [provided by RefSeq, Jan 2012],

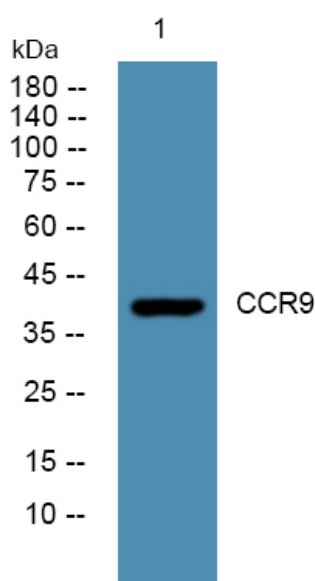
matters needing attention

Avoid repeated freezing and thawing!

Usage suggestions

This product can be used in immunological reaction related experiments. For more information, please consult technical personnel.

Products Images



Western blot analysis of lysates from K562 cells, primary antibody was diluted at 1:1000, 4° over night