

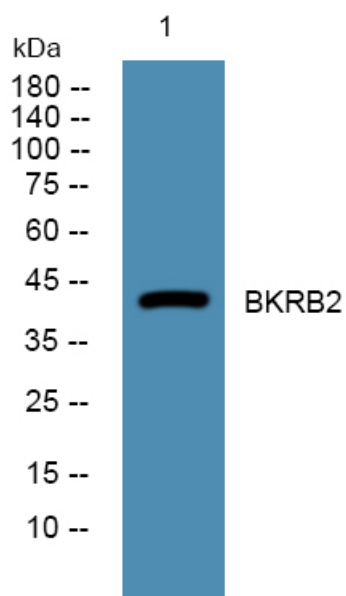


BKRB2 Polyclonal Antibody

Catalog No	YP-Ab-07362
Isotype	IgG
Reactivity	Human;Rat;Mouse;
Applications	WB;ELISA
Gene Name	BDKRB2 BKR2
Protein Name	B2 bradykinin receptor (B2R) (BK-2 receptor)
Immunogen	Synthesized peptide derived from human protein . at AA range: 140-220
Specificity	BKRB2 Polyclonal Antibody detects endogenous levels of protein.
Formulation	Liquid in PBS containing 50% glycerol, and 0.02% sodium azide.
Source	Polyclonal, Rabbit,IgG
Purification	The antibody was affinity-purified from rabbit antiserum by affinity-chromatography using epitope-specific immunogen.
Dilution	WB 1:500-2000 ELISA 1:5000-20000
Concentration	1 mg/ml
Purity	≥90%
Storage Stability	-20°C/1 year
Synonyms	
Observed Band	43kD
Cell Pathway	Cell membrane; Multi-pass membrane protein.
Tissue Specificity	Ubiquitous. Widespread in normal smooth muscle tissue and neurons.
Function	function:Receptor for bradykinin. It is associated with G proteins that activate a phosphatidylinositol-calcium second messenger system.,online information:Bradykinin receptor entry,similarity:Belongs to the G-protein coupled receptor 1 family.,tissue specificity:Ubiquitous. Widespread in normal smooth muscle tissue and neurons.,
Background	This gene encodes a receptor for bradykinin. The 9 aa bradykinin peptide elicits many responses including vasodilation, edema, smooth muscle spasm and pain fiber stimulation. This receptor associates with G proteins that stimulate a phosphatidylinositol-calcium second messenger system. Alternate start codons result in two isoforms of the protein. [provided by RefSeq, Jul 2008],
matters needing attention	Avoid repeated freezing and thawing!

Usage suggestions

This product can be used in immunological reaction related experiments. For more information, please consult technical personnel.

Products Images

Western blot analysis of lysates from DU145 cells, primary antibody was diluted at 1:1000, 4° over night