



# DEF6 Polyclonal Antibody

<b>Catalog No</b>	YP-Ab-07357
<b>Isotype</b>	IgG
<b>Reactivity</b>	Human;Rat;Mouse;
<b>Applications</b>	WB;ELISA
<b>Gene Name</b>	DEFA6 DEF6
<b>Protein Name</b>	Defensin-6 (Defensin, alpha 6)
<b>Immunogen</b>	Synthesized peptide derived from human protein . at AA range: 51-100
<b>Specificity</b>	DEF6 Polyclonal Antibody detects endogenous levels of protein.
<b>Formulation</b>	Liquid in PBS containing 50% glycerol, and 0.02% sodium azide.
<b>Source</b>	Polyclonal, Rabbit,IgG
<b>Purification</b>	The antibody was affinity-purified from rabbit antiserum by affinity-chromatography using epitope-specific immunogen.
<b>Dilution</b>	WB 1:500-2000 ELISA 1:5000-20000
<b>Concentration</b>	1 mg/ml
<b>Purity</b>	≥90%
<b>Storage Stability</b>	-20°C/1 year
<b>Synonyms</b>	
<b>Observed Band</b>	11kD
<b>Cell Pathway</b>	Secreted . Cytoplasmic vesicle, secretory vesicle . Stored as propeptide in secretory granules of small intestinal Paneth cells and found in the ileum lumen as mature peptide. .
<b>Tissue Specificity</b>	Expressed in Paneth cells of the small intestine (at protein level).
<b>Function</b>	function:Has very low antimicrobial activity against Gram-negative and Gram-positive bacteria. May protect cells against infection with HIV-1.,similarity:Belongs to the alpha-defensin family.,subunit:Homodimer.,tissue specificity:Paneth cells of the small intestine.,
<b>Background</b>	defensin alpha 6(DEFA6) Homo sapiens Defensins are a family of antimicrobial and cytotoxic peptides thought to be involved in host defense. They are abundant in the granules of neutrophils and also found in the epithelia of mucosal surfaces such as those of the intestine, respiratory tract, urinary tract, and vagina. Members of the defensin family are highly similar in protein sequence and distinguished by a conserved cysteine motif. Several alpha defensin genes appear to be clustered on chromosome 8. The protein encoded by this gene, defensin, alpha 6, is highly expressed in the secretory granules of Paneth cells of the small intestine, and likely plays a role in host defense of human bowel. [provided by RefSeq, Oct 2014],

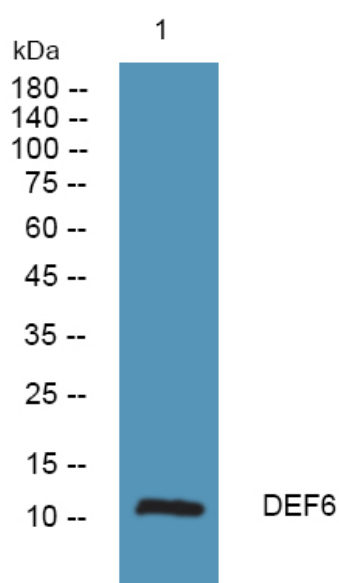
**matters needing attention**

Avoid repeated freezing and thawing!

**Usage suggestions**

This product can be used in immunological reaction related experiments. For more information, please consult technical personnel.

## Products Images



Western blot analysis of lysates from K562 cells, primary antibody was diluted at 1:1000, 4° over night