



NIPA1 Polyclonal Antibody

Catalog No	YP-Ab-07350
Isotype	IgG
Reactivity	Human;Mouse
Applications	WB;ELISA
Gene Name	NIPA1 SPG6
Protein Name	Magnesium transporter NIPA1 (Non-imprinted in Prader-Willi/Angelman syndrome region protein 1) (Spastic paraplegia 6 protein)
Immunogen	Synthesized peptide derived from human protein . at AA range: 111-160
Specificity	NIPA1 Polyclonal Antibody detects endogenous levels of protein.
Formulation	Liquid in PBS containing 50% glycerol, and 0.02% sodium azide.
Source	Polyclonal, Rabbit,IgG
Purification	The antibody was affinity-purified from rabbit antiserum by affinity-chromatography using epitope-specific immunogen.
Dilution	WB 1:500-2000 ELISA 1:5000-20000
Concentration	1 mg/ml
Purity	≥90%
Storage Stability	-20°C/1 year
Synonyms	
Observed Band	36kD
Cell Pathway	Cell membrane ; Multi-pass membrane protein . Early endosome . Recruited to the cell membrane in response to low extracellular magnesium. .
Tissue Specificity	Widely expressed with highest levels in neuronal tissues.
Function	disease:Defects in NIPA1 are the cause of spastic paraplegia autosomal dominant type 6 (SPG6) [MIM:600363]. Spastic paraplegia is a degenerative spinal cord disorder characterized by a slow, gradual, progressive weakness and spasticity of the lower limbs.,sequence caution:Contaminating sequence. Sequence of unknown origin in the N-terminal part.,similarity:Belongs to the NIPA family.,tissue specificity:Widely expressed with highest levels in neuronal tissues.,
Background	This gene encodes a magnesium transporter that associates with early endosomes and the cell surface in a variety of neuronal and epithelial cells. This protein may play a role in nervous system development and maintenance. Multiple transcript variants encoding different isoforms have been found for this gene. Mutations in this gene have been associated with autosomal dominant spastic paraplegia 6. [provided by RefSeq, Nov 2008],

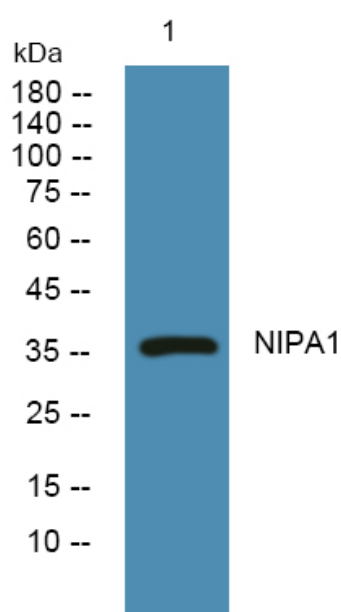
matters needing attention

Avoid repeated freezing and thawing!

Usage suggestions

This product can be used in immunological reaction related experiments. For more information, please consult technical personnel.

Products Images



Western blot analysis of lysates from PC12 cells, primary antibody was diluted at 1:1000, 4° over night