



# CISD2 Polyclonal Antibody

<b>Catalog No</b>	YP-Ab-07336
<b>Isotype</b>	IgG
<b>Reactivity</b>	Human;Mouse
<b>Applications</b>	WB;ELISA
<b>Gene Name</b>	CISD2 CDGSH2 ERIS ZCD2
<b>Protein Name</b>	CDGSH iron-sulfur domain-containing protein 2 (Endoplasmic reticulum intermembrane small protein) (MitoNEET-related 1 protein) (Miner1) (Nutrient-deprivation autophagy factor-1) (NAF-1)
<b>Immunogen</b>	Synthesized peptide derived from human protein . at AA range: 31-80
<b>Specificity</b>	CISD2 Polyclonal Antibody detects endogenous levels of protein.
<b>Formulation</b>	Liquid in PBS containing 50% glycerol, and 0.02% sodium azide.
<b>Source</b>	Polyclonal, Rabbit,IgG
<b>Purification</b>	The antibody was affinity-purified from rabbit antiserum by affinity-chromatography using epitope-specific immunogen.
<b>Dilution</b>	WB 1:500-2000 ELISA 1:5000-20000
<b>Concentration</b>	1 mg/ml
<b>Purity</b>	≥90%
<b>Storage Stability</b>	-20°C/1 year
<b>Synonyms</b>	
<b>Observed Band</b>	14kD
<b>Cell Pathway</b>	Endoplasmic reticulum membrane; Single-pass membrane protein. Mitochondrion outer membrane; Single-pass membrane protein. According to PubMed:20010695, it mainly localizes to the endoplasmic reticulum. However, experiments in mouse showed that it mainly localizes to the mitochondrion outer membrane.
<b>Tissue Specificity</b>	Testis, small intestine, kidney, lung, brain, heart, pancreas and platelets.
<b>Function</b>	caution:Although initially though (PubMed:17846994) to be a zinc-finger protein, it was later shown (PubMed:17376863) that it binds 1 2Fe-2S cluster instead.,cofactor:Binds 1 2Fe-2S cluster.,disease:Defects in CISD2 are the cause of Wolfram syndrome 2 (WFS2) [MIM:604928]. WFS2 is a rare autosomal recessive disorder characterized by characterized by optic atrophy and diabetes mellitus. Other symptoms include the presence of profound upper gastrointestinal ulceration, significant bleeding tendency, defective platelet aggregation with collagen and various neurological symptoms.,function:May play a role in calcium homeostasis.,similarity:Belongs to the CISD protein family.,tissue specificity:Testis, small intestine, kidney, lung, brain, heart, pancreas and platelets.,

**Background**

The protein encoded by this gene is a zinc finger protein that localizes to the endoplasmic reticulum. The encoded protein binds an iron/sulfur cluster and may be involved in calcium homeostasis. Defects in this gene are a cause of Wolfram syndrome 2. [provided by RefSeq, Mar 2011],

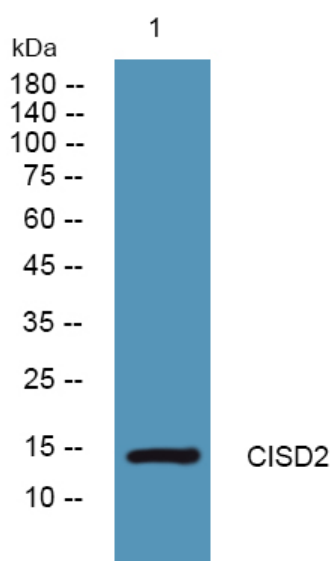
**matters needing attention**

Avoid repeated freezing and thawing!

**Usage suggestions**

This product can be used in immunological reaction related experiments. For more information, please consult technical personnel.

## Products Images



Western blot analysis of lysates from A431 cells, primary antibody was diluted at 1:1000, 4°over night