



ZBP1 Polyclonal Antibody

Catalog No	YP-Ab-07330
Isotype	IgG
Reactivity	Human;Rat;Mouse;
Applications	WB;ELISA
Gene Name	ZBP1 C20orf183 DLM1
Protein Name	Z-DNA-binding protein 1 (Tumor stroma and activated macrophage protein DLM-1)
Immunogen	Synthesized peptide derived from human protein . at AA range: 21-70
Specificity	ZBP1 Polyclonal Antibody detects endogenous levels of protein.
Formulation	Liquid in PBS containing 50% glycerol, and 0.02% sodium azide.
Source	Polyclonal, Rabbit,IgG
Purification	The antibody was affinity-purified from rabbit antiserum by affinity-chromatography using epitope-specific immunogen.
Dilution	WB 1:500-2000 ELISA 1:5000-20000
Concentration	1 mg/ml
Purity	≥90%
Storage Stability	-20°C/1 year
Synonyms	
Observed Band	47kD
Cell Pathway	Cytoplasm . Nucleus . Mainly cytoplasmic (PubMed:16876127, PubMed:16990255). Accumulates in the nucleus in response to influenza A virus (IAV) infection: senses IAV defective viral genomes RNA in the nucleus (By similarity). .; [Isoform 7]: Cytoplasm . Nucleus . Compared to isoform 1, a higher proportion of this isoform is localized in the nucleus. .
Tissue Specificity	Highly expressed in lymphatic tissues including lymph node, leukocytes, tonsil, bone marrow and spleen (PubMed:11842111). Expressed to a lesser extent in thymus, lung and liver (PubMed:11842111).
Function	alternative products:Additional isoforms seem to exist,function:May play a role in host defense against tumors and pathogens. Binds Z-DNA.,similarity:Contains 2 DRADA repeats.,tissue specificity:Highly expressed in lymphatic tissues including lymph node, leukocytes, tonsil, bone marrow and spleen. Expressed to a lesser extent in thymus, lung and liver.,
Background	This gene encodes a Z-DNA binding protein. The encoded protein plays a role in the innate immune response by binding to foreign DNA and inducing type-I interferon production. Alternatively spliced transcript variants encoding multiple isoforms have been observed for this gene. [provided by RefSeq, Dec 2011],

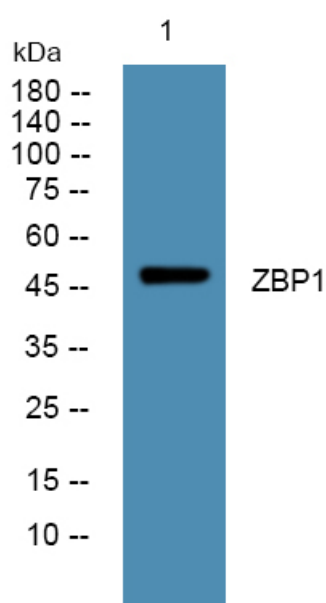
matters needing attention

Avoid repeated freezing and thawing!

Usage suggestions

This product can be used in immunological reaction related experiments. For more information, please consult technical personnel.

Products Images



Western blot analysis of lysates from SW480 cells, primary antibody was diluted at 1:1000, 4°over night