



SCO2 Polyclonal Antibody

Catalog No	YP-Ab-07323
Isotype	IgG
Reactivity	Human;Mouse
Applications	WB;ELISA
Gene Name	SCO2
Protein Name	Protein SCO2 homolog, mitochondrial
Immunogen	Synthesized peptide derived from human protein . at AA range: 181-230
Specificity	SCO2 Polyclonal Antibody detects endogenous levels of protein.
Formulation	Liquid in PBS containing 50% glycerol, and 0.02% sodium azide.
Source	Polyclonal, Rabbit,IgG
Purification	The antibody was affinity-purified from rabbit antiserum by affinity-chromatography using epitope-specific immunogen.
Dilution	WB 1:500-2000 ELISA 1:5000-20000
Concentration	1 mg/ml
Purity	≥90%
Storage Stability	-20°C/1 year
Synonyms	
Observed Band	29kD
Cell Pathway	Mitochondrion inner membrane ; Single-pass membrane protein .
Tissue Specificity	Ubiquitous.
Function	disease:Defects in SCO2 are the cause of fatal infantile cardioencephalomyopathy with cytochrome c oxidase deficiency (FIC) [MIM:604377, 220110]. This disease is characterized by hypertrophic cardiomyopathy, lactic acidosis, and gliosis. Heart and skeletal muscle show reductions in cytochrome c oxidase (COX) activity, whereas liver and fibroblasts show mild COX deficiencies.,function:Acts as a copper chaperone, transporting copper to the Cu(A) site on the cytochrome c oxidase subunit II (COX2).,similarity:Belongs to the SCO1/2 family.,similarity:Contains 1 thioredoxin domain.,tissue specificity:Ubiquitous.,
Background	Cytochrome c oxidase (COX) catalyzes the transfer of electrons from cytochrome c to molecular oxygen, which helps to maintain the proton gradient across the inner mitochondrial membrane that is necessary for aerobic ATP production. Human COX is a multimeric protein complex that requires several assembly factors; this gene encodes one of the COX assembly factors. The encoded protein is a metallochaperone that is involved in the biogenesis of



cytochrome c oxidase subunit II. Mutations in this gene are associated with fatal infantile encephalocardiomyopathy and myopia 6. [provided by RefSeq, Oct 2014],

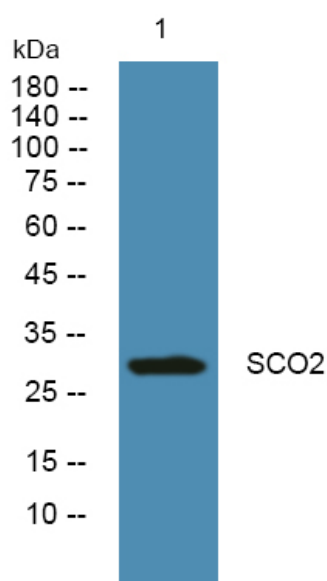
matters needing attention

Avoid repeated freezing and thawing!

Usage suggestions

This product can be used in immunological reaction related experiments. For more information, please consult technical personnel.

Products Images



Western blot analysis of lysates from SW480 cells, primary antibody was diluted at 1:1000, 4° over night