

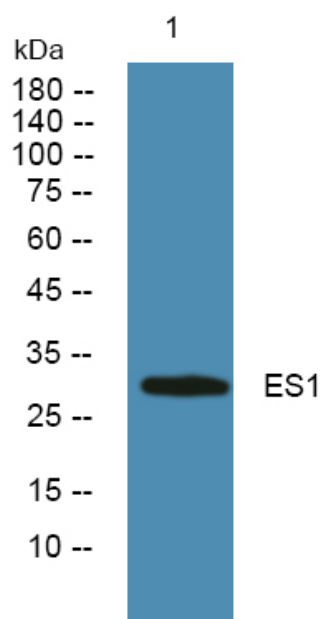


ES1 Polyclonal Antibody

Catalog No	YP-Ab-07300
Isotype	IgG
Reactivity	Human;Mouse;Rat
Applications	WB;ELISA
Gene Name	C21orf33 HES1 KNPI
Protein Name	ES1 protein homolog, mitochondrial (Protein GT335) (Protein KNP-I)
Immunogen	Synthesized peptide derived from human protein . at AA range: 121-170
Specificity	ES1 Polyclonal Antibody detects endogenous levels of protein.
Formulation	Liquid in PBS containing 50% glycerol, and 0.02% sodium azide.
Source	Polyclonal, Rabbit,IgG
Purification	The antibody was affinity-purified from rabbit antiserum by affinity-chromatography using epitope-specific immunogen.
Dilution	WB 1:500-2000 ELISA 1:5000-20000
Concentration	1 mg/ml
Purity	≥90%
Storage Stability	-20°C/1 year
Synonyms	
Observed Band	29kD
Cell Pathway	mitochondrion,
Tissue Specificity	Brain,Cajal-Retzius cell,Liver,Lung,
Function	similarity:Belongs to the ES1 family.,tissue specificity:Ubiquitous, but strongly expressed in heart and skeletal muscle.,
Background	This gene encodes a potential mitochondrial protein that is a member of the DJ-1/Pfpl gene family. This protein is overexpressed in fetal Down syndrome brain. Alternate splicing results in multiple transcript variants. [provided by RefSeq, May 2010],
matters needing attention	Avoid repeated freezing and thawing!
Usage suggestions	This product can be used in immunological reaction related experiments. For more information, please consult technical personnel.



Products Images



Western blot analysis of lysates from SH-SY5Y cells, primary antibody was diluted at 1:1000, 4°over night