

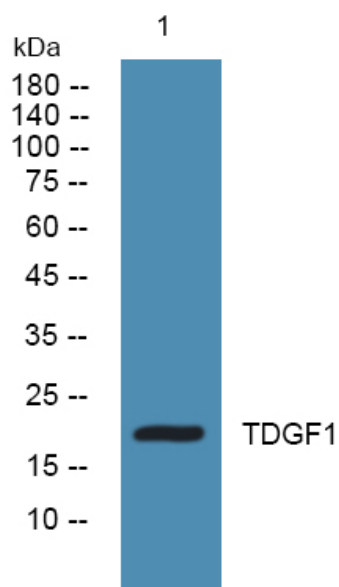


TDGF1 Polyclonal Antibody

Catalog No	YP-Ab-07290
Isotype	IgG
Reactivity	Human;Rat;Mouse;
Applications	WB;ELISA
Gene Name	TDGF1 CRIPTO
Protein Name	Teratocarcinoma-derived growth factor 1 (Cripto-1 growth factor) (CRGF) (Epidermal growth factor-like cripto protein CR1)
Immunogen	Synthesized peptide derived from human protein . at AA range: 21-70
Specificity	TDGF1 Polyclonal Antibody detects endogenous levels of protein.
Formulation	Liquid in PBS containing 50% glycerol, and 0.02% sodium azide.
Source	Polyclonal, Rabbit,IgG
Purification	The antibody was affinity-purified from rabbit antiserum by affinity-chromatography using epitope-specific immunogen.
Dilution	WB 1:500-2000 ELISA 1:5000-20000
Concentration	1 mg/ml
Purity	≥90%
Storage Stability	-20°C/1 year
Synonyms	
Observed Band	20kD
Cell Pathway	Cell membrane ; Lipid-anchor, GPI-anchor . Secreted . Released from the cell membrane by GPI cleavage. .
Tissue Specificity	Preferentially expressed in gastric and colorectal carcinomas than in their normal counterparts. Expressed in breast and lung.
Function	function:Could play a role in the determination of the epiblastic cells that subsequently give rise to the mesoderm.,similarity:Contains 1 EGF-like domain.,tissue specificity:Preferentially expressed in gastric and colorectal carcinomas than in their normal counterparts.,
Background	This gene encodes an epidermal growth factor-related protein that contains a cripto, FRL-1, and cryptic domain. The encoded protein is an extracellular, membrane-bound signaling protein that plays an essential role in embryonic development and tumor growth. Mutations in this gene are associated with forebrain defects. Pseudogenes of this gene are found on chromosomes 2, 3, 6, 8, 19 and X. Alternate splicing results in multiple transcript variants. [provided by RefSeq, Mar 2010],
matters needing attention	Avoid repeated freezing and thawing!

Usage suggestions

This product can be used in immunological reaction related experiments. For more information, please consult technical personnel.

Products Images

Western blot analysis of lysates from K562 cells,
primary antibody was diluted at 1:1000, 4°over night