



YIPF3 Polyclonal Antibody

Catalog No	YP-Ab-07281
Isotype	IgG
Reactivity	Human;Mouse;Rat
Applications	WB;ELISA
Gene Name	YIPF3 C6orf109 KLIP1
Protein Name	Protein YIPF3 (Killer lineage protein 1) (Natural killer cell-specific antigen KLIP1) (YIP1 family member 3) [Cleaved into: Protein YIPF3, 36 kDa form III]
Immunogen	Synthesized peptide derived from human protein . at AA range: N-terminal
Specificity	YIPF3 Polyclonal Antibody detects endogenous levels of protein.
Formulation	Liquid in PBS containing 50% glycerol, and 0.02% sodium azide.
Source	Polyclonal, Rabbit,IgG
Purification	The antibody was affinity-purified from rabbit antiserum by affinity-chromatography using epitope-specific immunogen.
Dilution	WB 1:500-2000 ELISA 1:5000-20000
Concentration	1 mg/ml
Purity	≥90%
Storage Stability	-20°C/1 year
Synonyms	
Observed Band	38kD
Cell Pathway	Cell membrane; Multi-pass membrane protein. Cytoplasm. Golgi apparatus, cis-Golgi network membrane ; Multi-pass membrane protein. Localization to the cytoplasm or to the cell membrane is developmentally and ontogenetically regulated.
Tissue Specificity	Expressed by nucleated hematopoietic cells (at protein level).
Function	developmental stage:Expressed in fetal liver (at protein level). Expressed in embryonic hematopoiesis sites.,function:May play a role in hematopoiesis.,PTM:Not glycosylated.,similarity:Belongs to the YIP1 family.,subcellular location:Localization to the cytoplasm or to the cell membrane is developmentally and ontogenetically regulated.,tissue specificity:Expressed by nucleated hematopoietic cells (at protein level),.
Background	developmental stage:Expressed in fetal liver (at protein level). Expressed in embryonic hematopoiesis sites.,function:May play a role in hematopoiesis.,PTM:Not glycosylated.,similarity:Belongs to the YIP1 family.,subcellular location:Localization to the cytoplasm or to the cell membrane is developmentally and ontogenetically regulated.,tissue specificity:Expressed by nucleated hematopoietic cells (at protein level),.



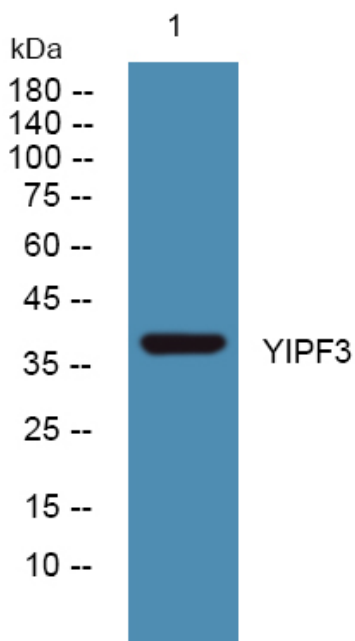
matters needing attention

Avoid repeated freezing and thawing!

Usage suggestions

This product can be used in immunological reaction related experiments. For more information, please consult technical personnel.

Products Images



Western blot analysis of lysates from A431 cells, primary antibody was diluted at 1:1000, 4° over night