



CHODL Polyclonal Antibody

Catalog No	YP-Ab-07275
Isotype	IgG
Reactivity	Human;Mouse
Applications	WB;ELISA
Gene Name	CHODL C21orf68 PRED12 UNQ872/PRO1890
Protein Name	Chondrolectin (Transmembrane protein MT75)
Immunogen	Synthesized peptide derived from human protein . at AA range: 140-220
Specificity	CHODL Polyclonal Antibody detects endogenous levels of protein.
Formulation	Liquid in PBS containing 50% glycerol, and 0.02% sodium azide.
Source	Polyclonal, Rabbit,IgG
Purification	The antibody was affinity-purified from rabbit antiserum by affinity-chromatography using epitope-specific immunogen.
Dilution	WB 1:500-2000 ELISA 1:5000-20000
Concentration	1 mg/ml
Purity	≥90%
Storage Stability	-20°C/1 year
Synonyms	
Observed Band	30kD
Cell Pathway	Cytoplasm . Membrane ; Single-pass type I membrane protein .; [Isoform 2]: Endoplasmic reticulum . Endoplasmic reticulum membrane ; Single-pass type I membrane protein .; [Isoform 3]: Cytoplasm .
Tissue Specificity	Found in spleen, testis, prostate and fetal liver. Expression limited to vascular muscle of testis, smooth muscle of prostate stroma, heart muscle, skeletal muscle, crypts of small intestine, and red pulp of spleen. B lymphocytes express isoform 2 only; peripheral blood T lymphocytes express isoform 3 only; granulocytes and monocytes express neither isoform 2 nor isoform 3. During development of T lymphocytes, bone marrow progenitor cells express isoform 2 only; thymocytes at different stages of maturation express predominantly isoform 2 and weakly isoform 3, and mature thymocytes express only isoform 2.
Function	online information:Chondrolectin,PTM:N-glycosylated.,similarity:Contains 1 C-type lectin domain.,tissue specificity:Found in spleen, testis, prostate and fetal liver. Expression limited to vascular muscle of testis, smooth muscle of prostate stroma, heart muscle, skeletal muscle, crypts of small intestine, and red pulp of spleen.,
Background	This gene encodes a type I membrane protein with a carbohydrate recognition domain characteristic of C-type lectins in its extracellular portion. In other proteins, this domain is involved in endocytosis of glycoproteins and exogenous



sugar-bearing pathogens. This protein localizes predominantly to the perinuclear region. Several transcript variants encoding a few different isoforms have been found for this gene. [provided by RefSeq, Feb 2011],

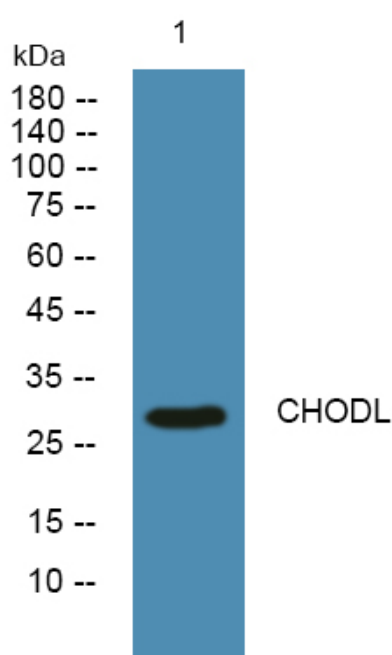
matters needing attention

Avoid repeated freezing and thawing!

Usage suggestions

This product can be used in immunological reaction related experiments. For more information, please consult technical personnel.

Products Images



Western blot analysis of lysates from KB cells, primary antibody was diluted at 1:1000, 4° over night