



SREC Polyclonal Antibody

Catalog No	YP-Ab-07252
Isotype	IgG
Reactivity	Human;Mouse
Applications	WB;ELISA
Gene Name	SCARF1 KIAA0149 SREC
Protein Name	Scavenger receptor class F member 1 (Acetyl LDL receptor) (Scavenger receptor expressed by endothelial cells 1) (SREC-I)
Immunogen	Synthesized peptide derived from human protein . at AA range: 390-470
Specificity	SREC Polyclonal Antibody detects endogenous levels of protein.
Formulation	Liquid in PBS containing 50% glycerol, and 0.02% sodium azide.
Source	Polyclonal, Rabbit,IgG
Purification	The antibody was affinity-purified from rabbit antiserum by affinity-chromatography using epitope-specific immunogen.
Dilution	WB 1:500-2000 ELISA 1:5000-20000
Concentration	1 mg/ml
Purity	≥90%
Storage Stability	-20°C/1 year
Synonyms	
Observed Band	91kD
Cell Pathway	Membrane ; Single-pass type I membrane protein .
Tissue Specificity	Endothelial cells.
Function	caution:The sequence shown here is derived from an Ensembl automatic analysis pipeline and should be considered as preliminary data.,function:Mediates the binding and degradation of acetylated low density lipoprotein (Ac-LDL). Mediates heterophilic interactions, suggesting a function as adhesion protein.,similarity:Contains 6 EGF-like domains.,subunit:Heterophilic interaction with SREC2 via its extracellular domain. The heterophilic interaction is suppressed by the presence of ligand such as Ac-LDL.,tissue specificity:Endothelial cells.,
Background	The protein encoded by this gene is a scavenger receptor that is expressed in endothelial cells. It regulates the uptake of chemically modified low density lipoproteins, including acetylated low density lipoprotein (Ac-LDL), and it may be involved in atherogenesis. This gene is regulated by the transcription factors ZNF444/EZF-2 and SP1. Alternative splicing results in multiple transcript variants. [provided by RefSeq, Apr 2013],



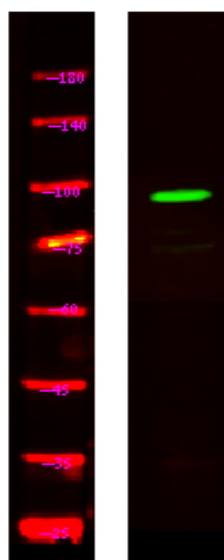
matters needing attention

Avoid repeated freezing and thawing!

Usage suggestions

This product can be used in immunological reaction related experiments. For more information, please consult technical personnel.

Products Images



Western Blot analysis of Hela lysis, using primary antibody at 1:1000 dilution. Secondary antibody(catalog#:RS23920) was diluted at 1:10000