

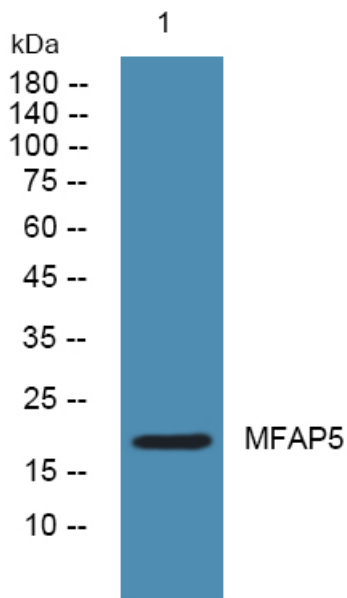


MFAP5 Polyclonal Antibody

Catalog No	YP-Ab-07241
Isotype	IgG
Reactivity	Human;Mouse
Applications	WB;ELISA
Gene Name	MFAP5 MAGP2
Protein Name	Microfibrillar-associated protein 5 (MFAP-5) (MP25) (Microfibril-associated glycoprotein 2) (MAGP-2)
Immunogen	Synthesized peptide derived from human protein . at AA range: 10-90
Specificity	MFAP5 Polyclonal Antibody detects endogenous levels of protein.
Formulation	Liquid in PBS containing 50% glycerol, and 0.02% sodium azide.
Source	Polyclonal, Rabbit,IgG
Purification	The antibody was affinity-purified from rabbit antiserum by affinity-chromatography using epitope-specific immunogen.
Dilution	WB 1:500-2000 ELISA 1:5000-20000
Concentration	1 mg/ml
Purity	≥90%
Storage Stability	-20°C/1 year
Synonyms	
Observed Band	19kD
Cell Pathway	Secreted, extracellular space, extracellular matrix.
Tissue Specificity	Liver,Skeletal muscle,Tongue,Uterus,
Function	function:Component of the elastin-associated microfibrils.,PTM:Forms intermolecular disulfide bonds either with other MAGP-2 molecules or with other components of the microfibrils.,similarity:Belongs to the MFAP family.,
Background	This gene encodes a 25-kD microfibril-associated glycoprotein which is a component of microfibrils of the extracellular matrix. The encoded protein promotes attachment of cells to microfibrils via alpha-V-beta-3 integrin. Deficiency of this gene in mice results in neutropenia. Alternate splicing results in multiple transcript variants encoding different isoforms. [provided by RefSeq, Jul 2014],
matters needing attention	Avoid repeated freezing and thawing!
Usage suggestions	This product can be used in immunological reaction related experiments. For more information, please consult technical personnel.



Products Images



Western blot analysis of lysates from SW480 cells,
primary antibody was diluted at 1:1000, 4°over night