

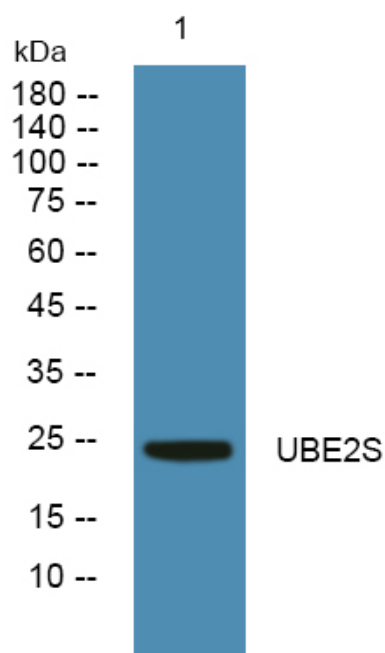


UBE2S Polyclonal Antibody

Catalog No	YP-Ab-06368
Isotype	IgG
Reactivity	Human;Rat;Mouse
Applications	WB;ELISA
Gene Name	UBE2S E2EPF OK/SW-cl.73
Protein Name	Ubiquitin-conjugating enzyme E2 S (EC 6.3.2.19) (E2-EPF) (Ubiquitin carrier protein S) (Ubiquitin-conjugating enzyme E2-24 kDa) (Ubiquitin-conjugating enzyme E2-EPF5) (Ubiquitin-protein ligase S)
Immunogen	Synthesized peptide derived from part region of human protein
Specificity	UBE2S Polyclonal Antibody detects endogenous levels of protein.
Formulation	Liquid in PBS containing 50% glycerol, and 0.02% sodium azide.
Source	Polyclonal, Rabbit,IgG
Purification	The antibody was affinity-purified from rabbit antiserum by affinity-chromatography using epitope-specific immunogen.
Dilution	WB 1:500-2000 ELISA 1:5000-20000
Concentration	1 mg/ml
Purity	≥90%
Storage Stability	-20°C/1 year
Synonyms	
Observed Band	24kD
Cell Pathway	anaphase-promoting complex,cytoplasm,
Tissue Specificity	Colon,Colon adenocarcinoma,Foreskin,Skin,Testis,
Function	catalytic activity:ATP + ubiquitin + protein lysine = AMP + diphosphate + protein N-ubiquityllysine.,function:Catalyzes the covalent attachment of ubiquitin to other proteins.,pathway:Protein modification; protein ubiquitination.,similarity:Belongs to the ubiquitin-conjugating enzyme family.,
Background	This gene encodes a member of the ubiquitin-conjugating enzyme family. The encoded protein is able to form a thiol ester linkage with ubiquitin in a ubiquitin activating enzyme-dependent manner, a characteristic property of ubiquitin carrier proteins. [provided by RefSeq, Jul 2008],
matters needing attention	Avoid repeated freezing and thawing!

**Usage suggestions**

This product can be used in immunological reaction related experiments. For more information, please consult technical personnel.

Products Images

Western blot analysis of lysates from HCT116 cells, primary antibody was diluted at 1:1000, 4° over night